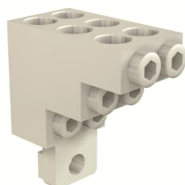




 PRODUCT-DETAILS

KIT MC Cu 6x14-2 AWG XT1 3pcs UL/CSA

KIT MC Cu 6x14-2 AWG XT1 3pcs UL/CSA



General Information

Extended Product Type	KIT MC Cu 6x14-2 AWG XT1 3pcs UL/CSA
Product ID	1SDA075897R1
EAN	8015644798741
Catalog Description	KIT MC Cu 6x14-2 AWG XT1 3pcs UL/CSA
Long Description	FRONT TERMINALS MULTICABLE FOR CABLES IN COPPER 6x14-2 AWG 3pcs XT1 UL/CSA

Material Compliance

REACH Declaration	9AKK108466A1425
RoHS Information	9AKK108466A1424
RoHS Status	Following EU Directive 2011/65/EU and Amendment 2015/863 July 22, 2019
Conflict Minerals Reporting Template (CMRT)	9AKK108467A5658
Toxic Substances Control Act - TSCA	9AKK108467A8326

Environmental

Environmental Information

9AKK108467A6707

Ordering

Order Code US and Canada	KXT1MC-3PC
EAN	8015644798741
Minimum Order Quantity	1 piece
Customs Tariff Number	85389099

Dimensions

Product Net Weight	0.556 kg
--------------------	----------

Container Information

Package Level 1 Units	box 1 piece
Package Level 1 Width	130 mm
Package Level 1 Height	135 mm
Package Level 1 Depth / Length	145 mm
Package Level 1 Gross Weight	0.585 kg
Package Level 1 EAN	8015644798741

Additional Information

Product Main Type	Accessories for Tmax XT
Product Name	Accessory
Product Type	Accessory
Suitable For	XT1

Technical

Configuration Type	Loose or configurable
Number of Poles	3P
Order Multiple	1 piece
Standards	UL489

Certificates and Declarations

Data Sheet, Technical Information	1SDC210200D0206 1SDC210199D0206
Declaration of Conformity - CE	Refer to the EU Declaration of the relative Circuit Breaker
Instructions and Manuals	1SDH000719R0808

External Classifications and Standards

ETIM 8	EC002019 - Connection vane/phase spreader
ETIM 9	EC002019 - Connection vane/phase spreader
IDEA Granular Category Code (IGCC)	4603 >> Electrical terminals
UNSPSC	39121432
WEEE Category	5. Small Equipment (No External Dimension More Than 50 cm)

Categories

Low Voltage Products and Systems → Circuit Breakers → Moulded Case Circuit Breakers → Accessories for Tmax XT

