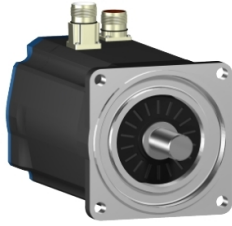


# Product datasheet

Specifications



## AC servo motor BSH, Lexium 05, 14.9N.m, 1500rpm, untapped shaft, with brake, IP50

BSH1402P01F1A

⚠ Discontinued on: 01-Nov-2020

⚠ Discontinued

### Main

<b>Device short name</b>	BSH
<b>Product or component type</b>	Servo motor
<b>Maximum mechanical speed</b>	4000 rpm
<b>Continuous stall torque</b>	19.5 N.m for LXM15MD40N4, 400 V, three phase 19.5 N.m for LXM15MD40N4, 480 V, three phase 14.9 N.m for LXM15LD28M3, 230 V, three phase 14.9 N.m for LXM15MD28N4, 230 V, three phase 14.9 N.m for LXM15MD28N4, 400 V, three phase 14.9 N.m for LXM15MD28N4, 480 V, three phase 19.5 N.m for LXM15MD40N4, 230 V, three phase 19.5 N.m for LXM15MD56N4, 230 V, three phase 19.5 N.m for LXM15MD56N4, 400 V, three phase 19.5 N.m for LXM15MD56N4, 480 V, three phase 19.2 N.m for LXM05AD42M3X, 200...240 V, three phase 19.2 N.m for LXM05AD57N4, 380...480 V, three phase 19.2 N.m for LXM05BD42M3X, 200...240 V, three phase 19.2 N.m for LXM05BD57N4, 380...480 V, three phase 19.2 N.m for LXM05CD42M3X, 200...240 V, three phase 19.2 N.m for LXM05CD57N4, 380...480 V, three phase
<b>Peak stall torque</b>	28.71 N.m for LXM15LD28M3, 230 V, three phase 28.71 N.m for LXM15MD28N4, 230 V, three phase 28.71 N.m for LXM15MD28N4, 400 V, three phase 28.71 N.m for LXM15MD28N4, 480 V, three phase 39.3 N.m for LXM15MD40N4, 230 V, three phase 39.3 N.m for LXM15MD40N4, 400 V, three phase 39.3 N.m for LXM15MD40N4, 480 V, three phase 47.5 N.m for LXM15MD56N4, 230 V, three phase 47.5 N.m for LXM15MD56N4, 400 V, three phase 47.5 N.m for LXM15MD56N4, 480 V, three phase 41.94 N.m for LXM05AD42M3X, 200...240 V, three phase 47.5 N.m for LXM05AD57N4, 380...480 V, three phase 41.94 N.m for LXM05BD42M3X, 200...240 V, three phase 47.5 N.m for LXM05BD57N4, 380...480 V, three phase 41.94 N.m for LXM05CD42M3X, 200...240 V, three phase 47.5 N.m for LXM05CD57N4, 380...480 V, three phase
<b>Nominal output power</b>	2350 W for LXM05AD42M3X, 200...240 V, three phase 2350 W for LXM05BD42M3X, 200...240 V, three phase 2350 W for LXM05CD42M3X, 200...240 V, three phase 2350 W for LXM15LD28M3, 230 V, three phase 2350 W for LXM15MD28N4, 230 V, three phase 2350 W for LXM15MD40N4, 230 V, three phase 2350 W for LXM15MD56N4, 230 V, three phase 3350 W for LXM15MD28N4, 480 V, three phase 3350 W for LXM15MD40N4, 480 V, three phase 3400 W for LXM05AD57N4, 380...480 V, three phase 3400 W for LXM05BD57N4, 380...480 V, three phase 3400 W for LXM05CD57N4, 380...480 V, three phase 3400 W for LXM15MD28N4, 400 V, three phase 3400 W for LXM15MD40N4, 400 V, three phase 3400 W for LXM15MD56N4, 400 V, three phase 3400 W for LXM15MD56N4, 480 V, three phase

Disclaimer: This documentation is not intended as a substitute for and is not to be used for determining suitability or reliability of these products for specific user applications

<b>Nominal torque</b>	8 N.m for LXM15MD40N4, 480 V, three phase 10.8 N.m for LXM05AD57N4, 380...480 V, three phase 10.8 N.m for LXM05BD57N4, 380...480 V, three phase 10.8 N.m for LXM05CD57N4, 380...480 V, three phase 10.8 N.m for LXM15MD28N4, 400 V, three phase 10.8 N.m for LXM15MD40N4, 400 V, three phase 10.8 N.m for LXM15MD56N4, 400 V, three phase 10.8 N.m for LXM15MD56N4, 480 V, three phase 15 N.m for LXM05AD42M3X, 200...240 V, three phase 15 N.m for LXM05BD42M3X, 200...240 V, three phase 15 N.m for LXM05CD42M3X, 200...240 V, three phase 15 N.m for LXM15LD28M3, 230 V, three phase 15 N.m for LXM15MD28N4, 230 V, three phase 15 N.m for LXM15MD40N4, 230 V, three phase 15 N.m for LXM15MD56N4, 230 V, three phase 8 N.m for LXM15MD28N4, 480 V, three phase
<b>Nominal speed</b>	1500 rpm for LXM05AD42M3X, 200...240 V, three phase 1500 rpm for LXM05BD42M3X, 200...240 V, three phase 1500 rpm for LXM05CD42M3X, 200...240 V, three phase 1500 rpm for LXM15MD28N4, 230 V, three phase 1500 rpm for LXM15MD40N4, 230 V, three phase 3000 rpm for LXM05AD57N4, 380...480 V, three phase 3000 rpm for LXM05BD57N4, 380...480 V, three phase 3000 rpm for LXM05CD57N4, 380...480 V, three phase 3000 rpm for LXM15MD28N4, 400 V, three phase 3000 rpm for LXM15MD40N4, 400 V, three phase 4000 rpm for LXM15MD28N4, 480 V, three phase 1500 rpm for LXM15LD28M3, 230 V, three phase 1500 rpm for LXM15MD56N4, 230 V, three phase 3000 rpm for LXM15MD56N4, 400 V, three phase 3000 rpm for LXM15MD56N4, 480 V, three phase 4000 rpm for LXM15MD40N4, 480 V, three phase
<b>Product compatibility</b>	LXM05AD42M3X at 200...240 V three phase LXM05BD42M3X at 200...240 V three phase LXM05CD42M3X at 200...240 V three phase LXM15LD28M3 at 230 V three phase LXM15MD28N4 at 400 V three phase LXM15MD28N4 at 480 V three phase LXM15MD40N4 at 400 V three phase LXM15MD40N4 at 480 V three phase LXM05AD57N4 at 380...480 V three phase LXM05BD57N4 at 380...480 V three phase LXM05CD57N4 at 380...480 V three phase LXM15MD28N4 at 230 V three phase LXM15MD40N4 at 230 V three phase LXM15MD56N4 at 230 V three phase LXM15MD56N4 at 400 V three phase LXM15MD56N4 at 480 V three phase
<b>Shaft end</b>	Untapped
<b>IP degree of protection</b>	IP50 standard
<b>Speed feedback resolution</b>	131072 points/turn
<b>Holding brake</b>	With
<b>mounting support</b>	International standard flange
<b>Electrical connection</b>	Straight connectors

## Complementary

<b>Range compatibility</b>	Lexium 15 Lexium 05
<b>supply voltage max</b>	480 V
<b>Network number of phases</b>	Three phase
<b>Continuous stall current</b>	13.2 A
<b>maximum continuous power</b>	4.2 W

<b>Maximum current Irms</b>	44.1 A for LXM15LD28M3 44.1 A for LXM15MD28N4 44.1 A for LXM15MD40N4 44.1 A for LXM15MD56N4 44.1 A for LXM05AD42M3X 44.1 A for LXM05AD57N4 44.1 A for LXM05BD42M3X 44.1 A for LXM05BD57N4 44.1 A for LXM05CD42M3X 44.1 A for LXM05CD57N4 72 A for LXM32.D72N4
<b>Maximum permanent current</b>	44.1 A
<b>Switching frequency</b>	4 kHz
<b>Second shaft</b>	Without second shaft end
<b>Shaft diameter</b>	24 mm
<b>Shaft length</b>	50 mm
<b>Feedback type</b>	Single turn SinCos Hiperface
<b>Holding torque</b>	23 N.m holding brake
<b>Motor flange size</b>	140 mm
<b>Number of motor stacks</b>	2
<b>Torque constant</b>	1.47 N.m/A at 120 °C
<b>Back emf constant</b>	101 V/krpm at 120 °C
<b>Number of motor poles</b>	10
<b>Rotor inertia</b>	14.48 kg.cm <sup>2</sup>
<b>Stator resistance</b>	0.6 Ohm at 20 °C
<b>Stator inductance</b>	7.4 mH at 20 °C
<b>Stator electrical time constant</b>	12.33 ms at 20 °C
<b>Maximum radial force Fr</b>	1680 N at 3000 rpm 1930 N at 2000 rpm 2430 N at 1000 rpm
<b>Maximum axial force Fa</b>	0.2 x Fr
<b>Brake pull-in power</b>	24 W
<b>Type of cooling</b>	Natural convection
<b>Length</b>	310.5 mm
<b>Centring collar diameter</b>	130 mm
<b>Centring collar depth</b>	3.5 mm
<b>Number of mounting holes</b>	4
<b>Mounting holes diameter</b>	11 mm
<b>Circle diameter of the mounting holes</b>	165 mm
<b>Net weight</b>	17.7 kg

## Packing Units

<b>Unit Type of Package 1</b>	PCE
<b>Number of Units in Package 1</b>	1
<b>Package 1 Height</b>	27.0 cm
<b>Package 1 Width</b>	27.0 cm
<b>Package 1 Length</b>	48.2 cm

---

Package 1 Weight 13.29 kg

## Contractual warranty

---

Warranty 18 months

## Sustainability

**Green Premium™ label** is Schneider Electric's commitment to delivering products with best-in-class environmental performance. Green Premium promises compliance with the latest regulations, transparency on environmental impacts, as well as circular and low-CO<sub>2</sub> products.

**Guide to assessing product sustainability** is a white paper that clarifies global eco-label standards and how to interpret environmental declarations.

[Learn more about Green Premium >](#)

[Guide to assess a product's sustainability >](#)



Transparency RoHS/REACH

## Well-being performance

Mercury Free

Rohs Exemption Information [Yes](#)

Pvc Free

## Certifications & Standards

**Eu Rohs Directive** Pro-active compliance (Product out of EU RoHS legal scope)

**China Rohs Regulation** [China RoHS declaration](#)

**Environmental Disclosure** [Product Environmental Profile](#)

**Weee** The product must be disposed on European Union markets following specific waste collection and never end up in rubbish bins

**Circularity Profile** No need of specific recycling operations