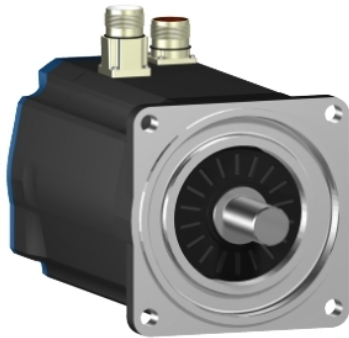


# BSH1401T32A1A

AC servo motor BSH, Lexium 05, 11.1N.m, 2500rpm, keyed shaft, without brake, IP65



## Main

Device short name	BSH
Product or Component Type	Servo motor
Maximum mechanical speed	4000 rpm
Continuous stall torque	98.2 Lbf.In (11.1 N.m) LXM15MD56N4, 230 V, three phase 100.9 Lbf.In (11.4 N.m) LXM05AD42M3X, 200...240 V, three phase 100.9 Lbf.In (11.4 N.m) LXM05BD42M3X, 200...240 V, three phase 100.9 lbf.in (11.4 N.m) LXM05CD42M3X, 200...240 V, three phase
Peak stall torque	206.49 Lbf.In (23.33 N.m) LXM15MD56N4, 230 V, three phase 206.49 Lbf.In (23.33 N.m) LXM05AD42M3X, 200...240 V, three phase 206.49 Lbf.In (23.33 N.m) LXM05BD42M3X, 200...240 V, three phase 206.49 lbf.in (23.33 N.m) LXM05CD42M3X, 200...240 V, three phase
Nominal output power	2000 W LXM15MD56N4, 230 V, three phase 2200 W LXM05AD42M3X, 200...240 V, three phase 2200 W LXM05BD42M3X, 200...240 V, three phase 2200 W LXM05CD42M3X, 200...240 V, three phase
Nominal torque	61.07 Lbf.In (6.9 N.m) LXM05AD42M3X, 200...240 V, three phase 61.07 Lbf.In (6.9 N.m) LXM05BD42M3X, 200...240 V, three phase 61.07 Lbf.In (6.9 N.m) LXM05CD42M3X, 200...240 V, three phase 67.53 lbf.in (7.63 N.m) LXM15MD56N4, 230 V, three phase
Nominal speed	3000 rpm LXM05AD42M3X, 200...240 V, three phase 3000 rpm LXM05BD42M3X, 200...240 V, three phase 3000 rpm LXM05CD42M3X, 200...240 V, three phase 2500 rpm LXM15MD56N4, 230 V, three phase
Product compatibility	LXM05AD42M3X 200...240 V three phase LXM05BD42M3X 200...240 V three phase LXM05CD42M3X 200...240 V three phase LXM15MD56N4 230 V three phase
Shaft end	Keyed
IP Degree of Protection	IP65 standard IP67 with IP67 kit
Speed feedback resolution	131072 points/turn x 4096 turns
Holding brake	Without
Mounting Support	International standard flange
Electrical Connection	Straight connectors

The information provided in this documentation contains general descriptions and/or technical characteristics of the performance of the products contained herein. This documentation is not intended as a substitute for and is not to be used for determining suitability or reliability of these products for specific user applications. It is the duty of any such user or integrator to perform the appropriate and complete risk analysis, evaluation and testing of the products with respect to the relevant specific application or use thereof. Neither Schneider Electric Industries SAS nor any of its affiliates or subsidiaries shall be responsible or liable for misuse of the information contained herein.

## Complementary

Range Compatibility	Lexium 05 Lexium 15
Supply voltage max	480 V
Phase	Three phase
Continuous stall current	13.9 A
Maximum continuous power	3.6 W
Maximum current Irms	37.1 A LXM15MD56N4 37.1 A LXM05AD42M3X 37.1 A LXM05BD42M3X 37.1 A LXM05CD42M3X
Maximum permanent current	37.1 A
Switching frequency	4 kHz
Second shaft	Without second shaft end
Shaft diameter	0.9 in (24 mm)
Shaft length	2.0 in (50 mm)
Key width	1.6 in (40 mm)
Feedback type	Multiturn SinCos Hiperface
Motor flange size	5.5 in (140 mm)
Number of motor stacks	1
Torque constant	0.83 N.m/A 248.0000000000 °F (120 °C)
Back emf constant	56 V/krpm 248.0000000000 °F (120 °C)
Number of motor poles	10
Rotor inertia	7.41 kg.cm <sup>2</sup>
Stator resistance	0.4 Ohm 68.0000000000 °F (20 °C) 0.44 Ohm 68.0000000000 °F (20 °C)
Stator inductance	4.9 MH 68.0000000000 °F (20 °C) 5.15 mH 68.0000000000 °F (20 °C)
Stator electrical time constant	11.14 Ms 68.0000000000 °F (20 °C) 12.88 ms 68.0000000000 °F (20 °C)
Maximum radial force Fr	1530 N 3000 rpm 1760 N 2000 rpm 2210 N 1000 rpm
Maximum axial force Fa	0.2 x Fr
Type of cooling	Natural convection
Length	8.6 in (217.5 mm)
Centring collar diameter	5.1 in (130 mm)
Centring collar depth	0.1 in (3.5 mm)
Number of mounting holes	4
Mounting holes diameter	0.4 in (11 mm)
Circle diameter of the mounting holes	6.5 in (165 mm)
Net Weight	26.2 lb(US) (11.9 kg)

## Ordering and shipping details

Category	US1PC5318282
Discount Schedule	PC53
GTIN	3389118141162
Returnability	No
Country of origin	DE

## Packing Units

Unit Type of Package 1	PCE
Number of Units in Package 1	1
Package 1 Height	10.6 in (27.0 cm)
Package 1 Width	10.6 in (27.0 cm)
Package 1 Length	19.0 in (48.2 cm)
Package 1 Weight	17.6 lb(US) (8.0 kg)

## Offer Sustainability

Sustainable offer status	Green Premium product
California proposition 65	WARNING: This product can expose you to chemicals including: Lead and lead compounds, which is known to the State of California to cause cancer and birth defects or other reproductive harm. For more information go to <a href="http://www.P65Warnings.ca.gov">www.P65Warnings.ca.gov</a>
EU RoHS Directive	Pro-active compliance (Product out of EU RoHS legal scope)
Mercury free	Yes
China RoHS Regulation	<a href="#">China RoHS Declaration</a>
RoHS exemption information	<a href="#">Yes</a>
Environmental Disclosure	<a href="#">Product Environmental Profile</a>
Circularity Profile	No need of specific recycling operations
WEEE	The product must be disposed on European Union markets following specific waste collection and never end up in rubbish bins.

## Contractual warranty

Warranty	18 months
----------	-----------