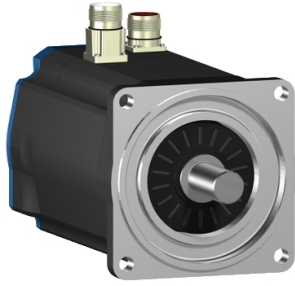


Product datasheet

Specifications



AC servo motor BSH, Lexium 15,
8.18N.m, 3500rpm, untapped
shaft, with brake, IP65

BSH1004T21F1A

⚠ Discontinued on: 7 Aug 2023

⚠ Discontinued

Main

Device short name	BSH
Product or component type	Servo motor
Maximum mechanical speed	6000 rpm
Continuous stall torque	9.31 N.m for LXM15MD40N4, 230 V, three phase 8.18 N.m for LXM15LD28M3, 230 V, three phase
Peak stall torque	15.7 N.m for LXM15LD28M3, 230 V, three phase 21.04 N.m for LXM15MD40N4, 230 V, three phase
Nominal output power	2500 W for LXM15LD28M3, 230 V, three phase 2500 W for LXM15MD40N4, 230 V, three phase
Nominal torque	7 N.m for LXM15LD28M3, 230 V, three phase 7 N.m for LXM15MD40N4, 230 V, three phase
Nominal speed	3500 rpm for LXM15LD28M3, 230 V, three phase 3500 rpm for LXM15MD40N4, 230 V, three phase
Product compatibility	LXM15LD28M3 at 230 V three phase LXM15MD40N4 at 230 V three phase
Shaft end	Untapped
IP degree of protection	IP65 standard IP67 with IP67 kit
Speed feedback resolution	131072 points/turn
Holding brake	With
mounting support	International standard flange
Electrical connection	Straight connectors

Complementary

Range compatibility	Lexium 15
supply voltage max	480 V
Network number of phases	Three phase
Continuous stall current	12.7 A
maximum continuous power	3.64 W
Maximum current Irms	34.8 A for LXM15LD28M3 61 A for LXM15MD40N4
Maximum permanent current	66.3 A
Second shaft	Without second shaft end
Shaft diameter	24 mm

Shaft length	50 mm
Feedback type	Single turn SinCos Hiperface
Holding torque	12 N.m holding brake
Motor flange size	100 mm
Number of motor stacks	4
Torque constant	1.62 N.m/A at 120 °C 0.86 N.m/A at 120 °C
Back emf constant	103 V/krpm at 120 °C 50 V/krpm at 120 °C
Number of motor poles	8
Rotor inertia	5.245 kg.cm ²
Stator resistance	1.81 Ohm at 20 °C
Stator inductance	13 mH at 20 °C 2.9 mH at 20 °C
Stator electrical time constant	6.44 ms at 20 °C 7.18 ms at 20 °C
Maximum radial force Fr	1070 N at 1000 rpm 740 N at 3000 rpm 850 N at 2000 rpm
Maximum axial force Fa	0.2 x Fr
Brake pull-in power	17 W
Type of cooling	Natural convection
Length	307.5 mm
Centring collar diameter	95 mm
Centring collar depth	3.5 mm
Number of mounting holes	4
Mounting holes diameter	9 mm
Circle diameter of the mounting holes	115 mm
Net weight	9.9 kg

Packing Units

Unit Type of Package 1	PCE
Number of Units in Package 1	1
Package 1 Height	19.2 cm
Package 1 Width	17.5 cm
Package 1 Length	55.7 cm
Package 1 Weight	10.7 kg

Contractual warranty

Warranty	18 months
----------	-----------

Sustainability

Green Premium™ label is Schneider Electric's commitment to delivering products with best-in-class environmental performance. Green Premium promises compliance with the latest regulations, transparency on environmental impacts, as well as circular and low-CO₂ products.

Guide to assessing product sustainability is a white paper that clarifies global eco-label standards and how to interpret environmental declarations.

[Learn more about Green Premium >](#)

[Guide to assess a product's sustainability >](#)



Transparency RoHS/REACH

Well-being performance

Mercury Free

Rohs Exemption Information [Yes](#)

Certifications & Standards

Eu Rohs Directive Pro-active compliance (Product out of EU RoHS legal scope)

China Rohs Regulation [China RoHS declaration](#)

Environmental Disclosure [Product Environmental Profile](#)

Weee The product must be disposed on European Union markets following specific waste collection and never end up in rubbish bins

Circularity Profile No need of specific recycling operations