






Labeling strips, for Operator panel with display 3UF721, for labeling the push-buttons




**General technical data**

product brand name	SIRIUS
product designation	Labeling strip
design of the product	For pushbuttons of the 3UF721 operator panel with display

**Certificates/ approvals**

General Product Approval	EMC	Declaration of Conformity	Test Certificates
<a href="#">Confirmation</a> 	 RCM	 EG-Konf.	 <a href="#">Type Test Certificates/Test Report</a>

**Marine / Shipping**      other

 ABS	 RMRS	<a href="#">Confirmation</a>	 Profibus
--	---	------------------------------	---

**Further information**

Siemens has decided to exit the Russian market (see here).  
<https://press.siemens.com/global/en/pressrelease/siemens-wind-down-russian-business>

Siemens is working on the renewal of the current EAC certificates.  
 Please contact your local Siemens office on the status of validity of the EAC certification if you intend to import or offer to supply these products to an EAC relevant market (other than the sanctioned EAEU member states Russia or Belarus).

Information on the packaging  
<https://support.industry.siemens.com/cs/ww/en/view/109813875>

Information- and Downloadcenter (Catalogs, Brochures,...)  
<https://www.siemens.com/ic10>

Industry Mall (Online ordering system)  
<https://mall.industry.siemens.com/mall/en/en/Catalog/product?mlfb=3UF7925-0AA01-0>

Cax online generator  
<http://support.automation.siemens.com/WW/CAXorder/default.aspx?lang=en&mlfb=3UF7925-0AA01-0>

Service&Support (Manuals, Certificates, Characteristics, FAQs,...)  
<https://support.industry.siemens.com/cs/ww/en/ps/3UF7925-0AA01-0>

Image database (product images, 2D dimension drawings, 3D models, device circuit diagrams, EPLAN macros, ...)  
[http://www.automation.siemens.com/bilddb/cax\\_de.aspx?mlfb=3UF7925-0AA01-0&lang=en](http://www.automation.siemens.com/bilddb/cax_de.aspx?mlfb=3UF7925-0AA01-0&lang=en)

Printing

Deutsch:

Bitte beacht  
Laserdrucker  
gewährleis

Português:

Por favor, t  
com impress  
pode imprim

Русский:

Обратите в  
лазерном п  
производи

Türkçe:

Yazı gentile  
ediniz! Yaz  
sadece yüz

English:

Please note  
ensure adeq

Español:

No olvide q  
láser. Para  
sobre la car

Français:

Remarque :  
laser ! Pour  
plus rugueu

Italiano:

Notare che  
Per assicura  
dell'etichet

Printing

Deutsch:

Bitte beacht  
Laserdrucker  
gewährleis

Português:

Por favor, te  
com impress  
pode imprim

Русский:

Обратите в  
лазерном п  
производит

Türkçe:

Yazı gentileri  
ediniz! Yazın  
sadece yüzü

English:

Please note t  
ensure adeq

Español:

No olvide qu  
láser. Para g  
sobre la car

Français:

Remarque :  
laser ! Pour  
plus rugueu

Italiano:

Notare che  
Per assicura  
dell'etichet

Printing instructions

SIEMENS

06-07-2006

Deutsch:

Bitte beachten Sie, dass die Beschriftungsstreifen nur zur Bedruckung durch einen Laserdrucker geeignet sind! Um eine ausreichende Haltbarkeit der Beschriftung zu gewährleisten, darf hierzu nur die rauhere der beiden Seiten bedruckt werden.

Portuguê:

Por favor  
com imp  
pode im

Русский:

Обрати  
лазерн  
произви

Türkçe:

Yazı şer  
ediniz! Ş  
sadece

English:

Please note  
ensure adeq

Español:

No olvide que  
láser. Para  
sobre la cara

Français:

Remarque : les  
laser ! Pour  
plus rugueuse.

Italiano:

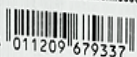
Notare che le  
Per assicurare  
dell'etichetta.

SIEMENS

Einschubstreifen	A4-Blatt	- 1200 Stück
Labeling strip	DIN A4 sheet	- 1200 pieces
Tira de inserção	folha A4	- 1200 peças
Пластина вставная	лист A4	- 1200 штук
İçe sürüm şeridi	A4 kağıt	- 1200 adet
Tira insertabile	hoja A4	- 1200 piezas
Bandes à insérer, format DIN A4		- 1200 pièces
Carta inseribile in formato A4		- 1200 pezzi

Info: <http://www.siemens.com/simocode>

Qty  
1200



\*E01\*

3UF7925-0AA02-0



RECYCLING

Para impressão  
to, so se

печатать в  
необходимо

dikkat  
inden

Please note that the labeling strips are only suitable for printing on a laser printer! To ensure adequate durability of the labels only use the rougher side of the strips.

No olvide que las tiras rotulables sólo son aptas para su inscripción con una impresora láser. Para garantizar una durabilidad aceptable de la inscripción sólo deberá imprimirse sobre la cara más áspera de las dos.

Remarque : les bandes de repérage ne conviennent qu'à l'impression par une imprimante laser ! Pour assurer durabilité suffisante du libellé, l'impression doit se faire sur la face la plus rugueuse.

Notare che le etichette di siglatura sono adatte solo per la stampa con stampante al laser! Per assicurare una buona durata della scritta, si deve stampare solo il lato più rugoso dell'etichetta.



Printing

Deutsch:

Bitte beacht  
Laserdrucker  
gewährleis

Português:

Por favor, t  
com impress  
pode imprim

Русский:

Обратите в  
лазерном п  
производи

Türkçe:

Yazı gentile  
ediniz! Yaz  
sadece yüz

English:

Please note  
ensure adeq

Español:

No olvide q  
láser. Para  
sobre la car

Français:

Remarque :  
laser ! Pour  
plus rugueu

Italiano:

Notare che l  
Per assicura  
dell'etichet

Printing

Deutsch:

Bitte beacht  
Laserdrucker  
gewährleis

Português:

Por favor, te  
com impress  
pode imprim

Русский:

Обратите в  
лазерном п  
производит

Türkçe:

Yazı gentileri  
ediniz! Yazın  
sadece yüze

English:

Please note t  
ensure adeq

Español:

No olvide qu  
láser. Para g  
sobre la car

Français:

Remarque :  
laser ! Pour  
plus rugueu

Italiano:

Notare che  
Per assicura  
dell'etichet

Printing instructions

**SIEMENS**

06-07-2006

Deutsch:

Bitte beachten Sie, dass die Beschriftungsstreifen nur zur Bedruckung durch einen Laserdrucker geeignet sind! Um eine ausreichende Haltbarkeit der Beschriftung zu gewährleisten, darf hierzu nur die rauhere der beiden Seiten bedruckt werden.

Portugu

Por favo  
com imp  
pode im

Русский:

Обрати  
лазерн  
произви

Türkçe:

Yazı şer  
ediniz!'  
sadece

English:

Please note that the labeling strips are only suitable for printing on a laser printer! To ensure adequate durability of the labels only use the rougher side of the strips.

Español:

No olvide que las tiras rotulables sólo son aptas para su inscripción con una impresora láser. Para garantizar una durabilidad aceptable de la inscripción sólo deberá imprimirse sobre la cara más áspera de las dos.

Français:

Remarque : les bandes de repérage ne conviennent qu'à l'impression par une imprimante laser ! Pour assurer durabilité suffisante du libellé, l'impression doit se faire sur la face la plus rugueuse.

Italiano:

Notare che le etichette di siglatura sono adatte solo per la stampa con stampante al laser! Per assicurare una buona durata della scritta, si deve stampare solo il lato più rugoso dell'etichetta.

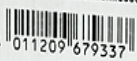
**SIEMENS**

Einschubstreifen	A4-Blatt	- 1200 Stück
Labeling strip	DIN A4 sheet	- 1200 pieces
Tira de inserção	folha A4	- 1200 peças
Пластина вставная	лист A4	- 1200 штук
İçerme şeridi	A4 kağıt	- 1200 adet
Tira insertable	hoja A4	- 1200 piezas
Bandes à insérer, format DIN A4		- 1200 pièces
Carta inseribile in formato A4		- 1200 pezzi

Info: <http://www.siemens.com/simocode>

Qty

1200



\*E01\*



3UF7925-0AA02-0

Para impressão  
to, so se

печатать в  
необходимо

çalıştırılmalıdır.  
dikkat  
inden

