



EMC surge suppression module, RC element, 690 V, 50 / 60 Hz, 7.5 kW, for motor contactors Size S00

General technical data

product brand name	SIRIUS
product designation	EMC suppression module
design of the surge suppressor	RC element

Control circuit/ Control

type of voltage of the control supply voltage	AC
control supply voltage frequency	
• 1 rated value	Hz 50
• 2 rated value	Hz 60
control supply voltage 1	
• at AC	
— at 50 Hz rated value	V 690
— at 60 Hz rated value	V 690

Certificates/ approvals

certificate of suitability	CE / UL / CSA
----------------------------	---------------

General Product Approval	EMC	Declaration of Conformity
--------------------------	-----	---------------------------



[Confirmation](#)



Declaration of Conformity	Test Certificates	Marine / Shipping
---------------------------	-------------------	-------------------



[Type Test Certificates/Test Report](#)

[Special Test Certificate](#)



Marine / Shipping	other	Railway	Environment
-------------------	-------	---------	-------------



[Confirmation](#)



[Vibration and Shock](#)

[Environmental Conformations](#)

Further information

Information- and Downloadcenter (Catalogs, Brochures,...)

<https://www.siemens.com/ic10>

Industry Mall (Online ordering system)

<https://mall.industry.siemens.com/mall/en/en/Catalog/product?mlfb=3RT2916-1PA3>

Cax online generator

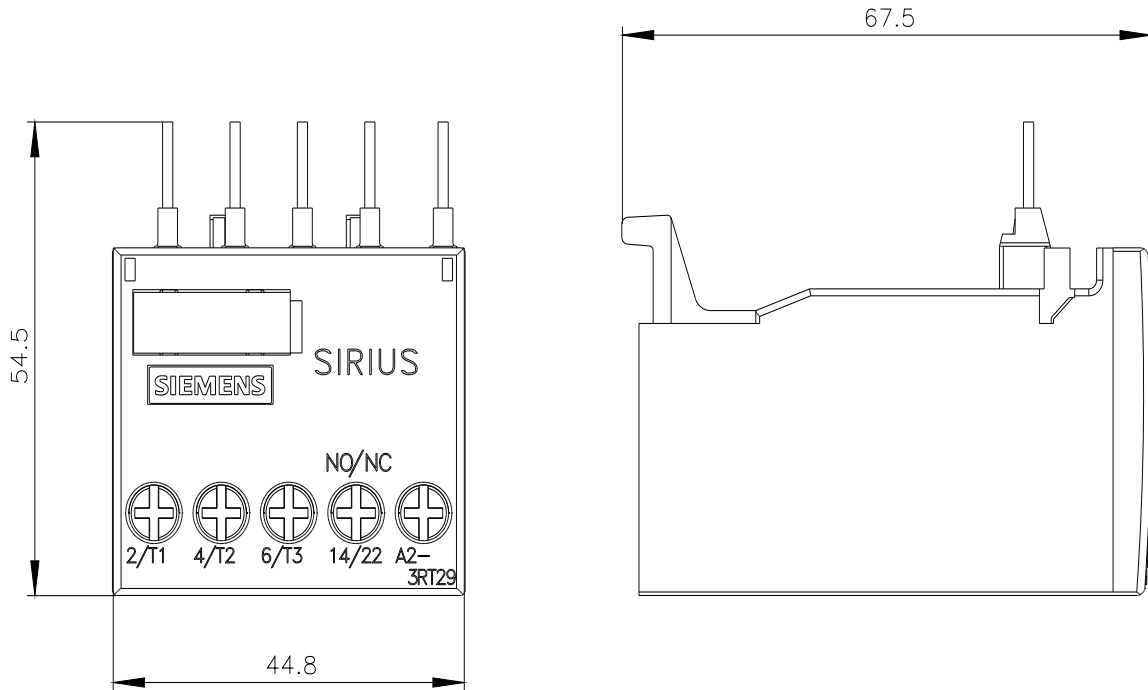
<http://support.automation.siemens.com/WW/CAXorder/default.aspx?lang=en&mlfb=3RT2916-1PA3>

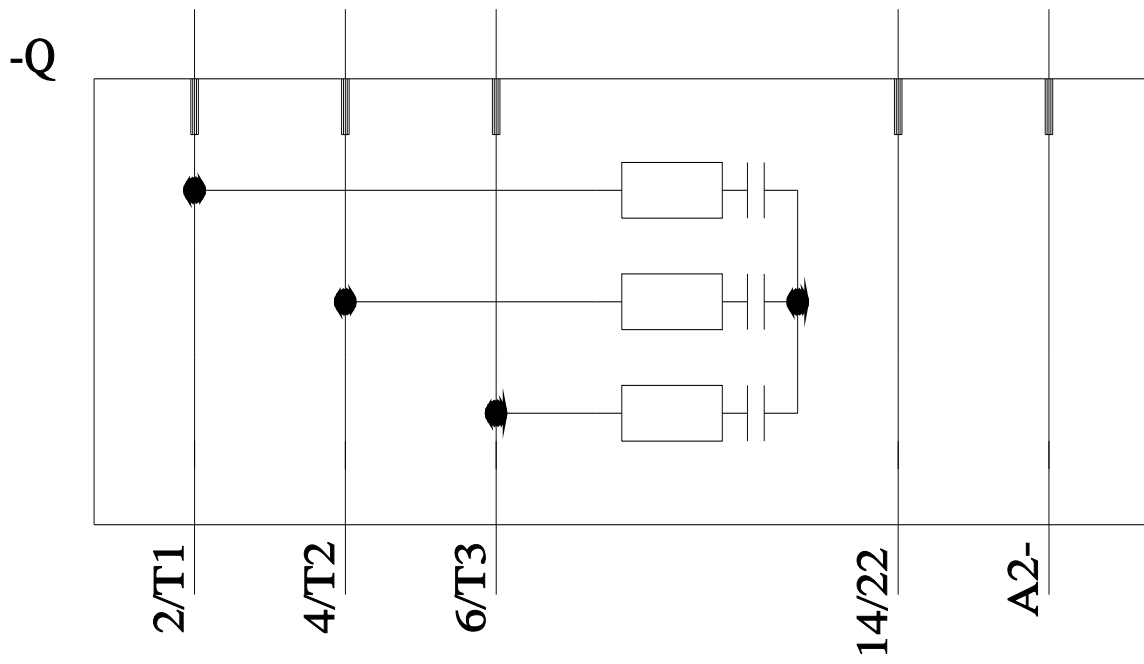
Service&Support (Manuals, Certificates, Characteristics, FAQs,...)

<https://support.industry.siemens.com/cs/ww/en/ps/3RT2916-1PA3>

Image database (product images, 2D dimension drawings, 3D models, device circuit diagrams, EPLAN macros, ...)

http://www.automation.siemens.com/bilddb/cax_de.aspx?mlfb=3RT2916-1PA3&lang=en





last modified:

10/22/2022 