

OVERLOAD RELAY 1...4 A FOR MOTOR PROTECTION
 SIZE S0,
 CLASS 10 CONTACTOR ASS. MAIN CIRCUIT: SPR.-
 LOAD.TERM.

General technical data:

Product brand name		SIRIUS
Product designation		solid-state overload relay
Protection class IP / frontal/front side		IP20
Insulation voltage / with degree of pollution 3 / rated value	V	690
Altitude of installation site / at a height over sea level / maximum	m	2,000
Ambient temperature		
• during storage	°C	-40 ... 80
• during transport	°C	-40 ... 80
• during the operating phase	°C	-25 ... 60
Relative humidity		
• during the operating phase	/ %	95
EMC immunity to interference		
• according to IEC 60947-1		corresponds to degree of severity 3
EMC emitted interference		
• according to IEC 60947-1		CISPR 11, environment B (residential area)
Conductor-bound parasitic coupling BURST		
• according to IEC 61000-4-4		2 kV (power ports), 1 kV (signal ports) corresponds to degree of severity 3
Conductor-bound parasitic coupling conductor-earth SURGE		
• according to IEC 61000-4-5		2 kV (line to earth) corresponds to degree of severity 3
Conductor-bound parasitic coupling conductor-conductor SURGE		
• according to IEC 61000-4-5		1 kV (line to line) corresponds to degree of severity 3
Electrostatic discharge		
• according to IEC 61000-4-2		6 kV contact discharge / 8 kV air discharge
Field-bound parasitic coupling		
• according to IEC 61000-4-3		10 V/m
Resistance against shock		15g / 11 ms
Impulse voltage resistance / rated value	kV	6
Real loss power / total / typical	W	0.05

Item designation		
<ul style="list-style-type: none"> • according to DIN 40719 extendable after IEC 204-2 / according to IEC 750 • according to DIN EN 61346-2 		F
Size of overload relay		S0
Size of the contactor / can be combined / company-specific		S0
Type of protection		PTB 09 ATEX 3001 Ex II (2) GD
Type of assignment		2
Trip class		CLASS 10

Main circuit:

Number of poles / for main current circuit		3
Operating voltage / at 3 AC / rated value		
<ul style="list-style-type: none"> • maximum 	V	690
Operating current / at AC-3 / at 400 V		
<ul style="list-style-type: none"> • rated value 	A	4
Adjustable response current		
<ul style="list-style-type: none"> • of the current-dependent overload release 	A	1 ... 4
Service power / for three-phase servomotors / at 400 V / at 50 Hz		
<ul style="list-style-type: none"> • for AC three-phase 	kW	0.55 ... 1.5
Operating current / of the fuse link		
<ul style="list-style-type: none"> • rated value 	A	20

Auxiliary circuit:

Contact reliability / of the auxiliary contacts		acceptability for PLC control (17 V, 5 mA)
Number of NC contacts / for auxiliary contact		1
Number of NO contacts / for auxiliary contact		1
Number of change-over switches / for auxiliary contact		0
Operating current / of the auxiliary contacts		
<ul style="list-style-type: none"> • at AC-15 <ul style="list-style-type: none"> • at 24 V • at 110 V • at 120 V • at 125 V • at 230 V • at DC-13 <ul style="list-style-type: none"> • at 24 V • at 60 V • at 110 V • at 125 V • at 220 V 	A	4
	A	4
	A	4
	A	4
	A	3
	A	2
	A	1
	A	0.3
	A	0.3
	A	1

Short-circuit:		
Design of the fuse link / for short-circuit protection of the auxiliary switch / required		fuse gL/gG: 6 A
Installation/mounting/dimensions:		
built in orientation		any
Type of fixing/fixation		direct mounting
Width	mm	45
Height	mm	87.3
Depth	mm	84.5
distance, to be maintained, to the ranks assembly		
• forwards	mm	0
• backwards	mm	0
• upwards	mm	0
• downwards	mm	0
• sideways	mm	0
distance, to be maintained, to earthed part		
• forwards	mm	6
• backwards	mm	0
• upwards	mm	6
• downwards	mm	6
• sideways	mm	6
distance, to be maintained, conductive elements		
• forwards	mm	6
• backwards	mm	0
• upwards	mm	6
• downwards	mm	6
• sideways	mm	6
Connections:		
design of the electrical connection		
• for main current circuit		spring-loaded terminals
• for auxiliary and control current circuit		spring-loaded terminals
Product function / removable terminal for auxiliary and control circuit		Yes
Type of the connectable conductor cross-section		
• for main contacts		
• unifilar		1x (1 ... 10 mm ²)
• stranded wire		1x (1 ... 10 mm ²)
• stranded wire		
• with conductor end processing		1x (1 ... 6 mm ²)

- without conductor final cutting
- at AWG-conductors / for main contacts
- for auxiliary contact
 - solid
 - stranded wire
 - with wire end processing
 - without conductor final cutting
- for AWG conductors / for auxiliary contacts

1x (1 ... 6 mm ²)
1x (18 ... 8)
1x (0.5 ... 1.5 mm ²), 2x (0.5 ... 1.5 mm ²)
1x (0.25 ... 1.5 mm ²), 2x (0.25 ... 1.5 mm ²)
1x (0.25 ... 1.5 mm ²), 2x (0.25 ... 1.5 mm ²)
1x (24 ... 16), 2x (24 ... 16)

Certificates/approvals:

verification of suitability

- ATEX

UL / CSA
Yes

Safety:

Protection against electrical shock

finger-safe

Further information:

Information- and Downloadcenter (Catalogs, Brochures,...)

<http://www.siemens.com/industrial-controls/catalogs>

Global Industry Mall (Online ordering system)

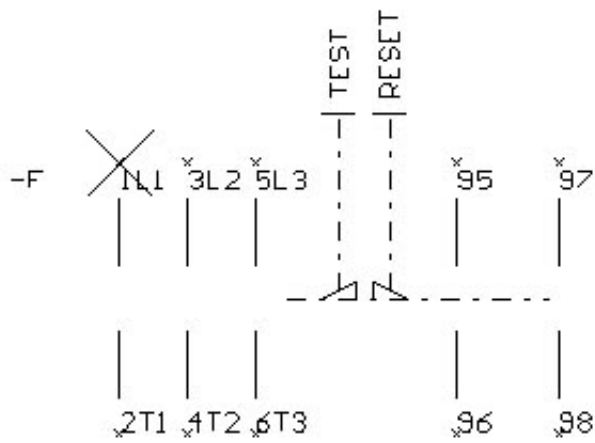
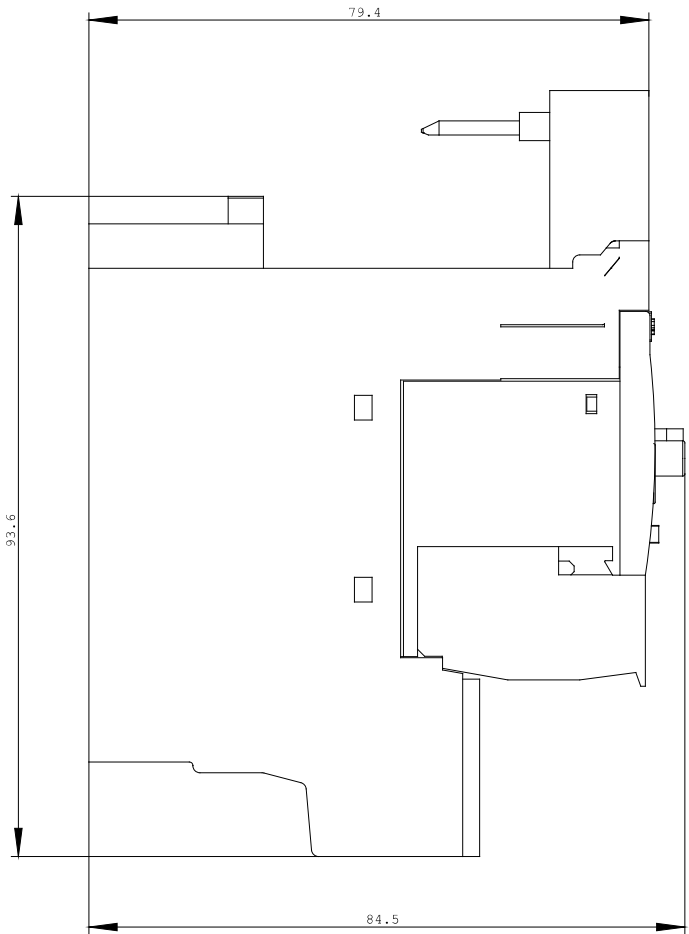
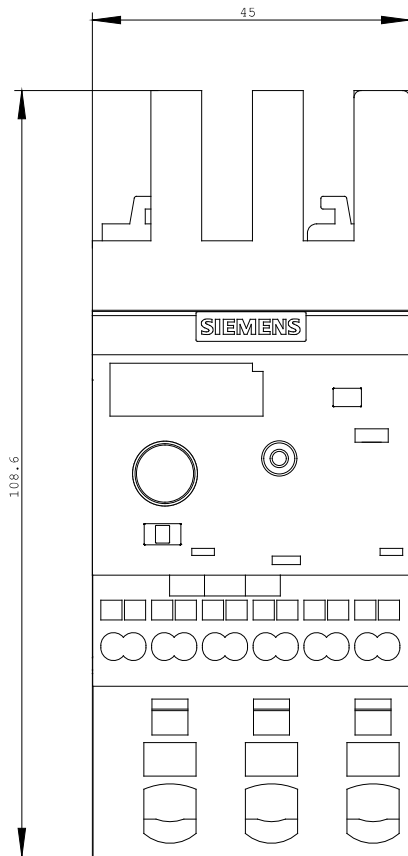
<http://www.siemens.com/industrial-controls/mall>

Service&Support (Manuals, Certificates, Characteristics, FAQs,...)

<http://support.automation.siemens.com/WW/view/en/3RB3026-1PE0/all>

Image database (product images, 2D dimension drawings, 3D models, device circuit diagrams, ...)

http://www.automation.siemens.com/bilddb/cax_en.aspx?mlfb=3RB3026-1PE0



last change:

Apr 26, 2010