

PTRV 8 /RDWH-COL - Marshalling panel



3001877

<https://www.phoenixcontact.com/us/products/3001877>

Please be informed that the data shown in this PDF document is generated from our online catalog. Please find the complete data in the user documentation. Our general terms of use for downloads are valid.



Marshalling panel, nom. voltage: 250 V, nominal current: 8 A, connection method: Push-in connection, 1st, 2nd, 3rd, 4th, 5th, 6th, 7th and 8th level, Rated cross section: 1.5 mm², cross section: 0.14 mm² - 2.5 mm², mounting: NS 35/7,5, NS 35/15, color: gray

Your advantages

- Tool-free wiring in a confined space thanks to compact size
- Individual color assignment of cable and terminal point to ensure error-free, safe operation
- High contact quality thanks to push-in technology as a replacement for Wire-Wrap®, TERMI-POINT®, etc.
- Color configuration possible according to VDE 0812, VDE 0815, DIN 47100 or unlimited.
- The 2.3 mm test pick-off enables testing between the conductors with commercially available test probes

Commercial data

Item number	3001877
Packing unit	1 pc
Minimum order quantity	1 pc
Note	Made to order (non-returnable)
Sales key	BE63
Product key	BE6211
Catalog page	Page 54 (C-1-2019)
GTIN	4055626038391
Weight per piece (including packing)	37.4 g
Weight per piece (excluding packing)	37.4 g
Customs tariff number	85369010
Country of origin	PL

PTRV 8 /RDWH-COL - Marshalling panel



3001877

<https://www.phoenixcontact.com/us/products/3001877>

Technical data

Product properties

Product type	Marshalling terminal
Number of positions	2
Number of connections	32
Number of rows	8
Potentials	8

Insulation characteristics

Overvoltage category	III
----------------------	-----

Electrical properties

Rated surge voltage	4 kV
Maximum power dissipation for nominal condition	0.56 W

Connection data

Number of connections per level	4
Nominal cross section	1.5 mm ²

1st, 2nd, 3rd, 4th, 5th, 6th, 7th and 8th level

Stripping length	8 mm ... 10 mm
Connection in acc. with standard	IEC 60947-7-1
Conductor cross section rigid	0.14 mm ² ... 2.5 mm ²
Cross section AWG	26 ... 14 (converted acc. to IEC)
Conductor cross section flexible	0.14 mm ² ... 1.5 mm ²
Conductor cross section, flexible [AWG]	26 ... 14 (converted acc. to IEC)
Conductor cross-section flexible (ferrule without plastic sleeve)	0.14 mm ² ... 1.5 mm ²
Flexible conductor cross section (ferrule with plastic sleeve)	0.14 mm ² ... 1.5 mm ²
Nominal current	8 A
Maximum load current	8 A (with 1.5 mm ² conductor cross section)
Nominal voltage	250 V
Nominal cross section	1.5 mm ²

1st, 2nd, 3rd, 4th, 5th, 6th, 7th and 8th level Connection cross sections directly pluggable

Conductor cross section rigid	0.34 mm ² ... 2.5 mm ²
Conductor cross section, rigid [AWG]	20 ... 14 (converted acc. to IEC)
Conductor cross section flexible	0.34 mm ² ... 1.5 mm ²
Conductor cross section, flexible [AWG]	14 (converted acc. to IEC)
Conductor cross-section flexible (ferrule without plastic sleeve)	0.34 mm ² ... 1.5 mm ²
Flexible conductor cross section (ferrule with plastic sleeve)	0.34 mm ² ... 1.5 mm ²

Dimensions

Width	8.3 mm
Height	100 mm

PTRV 8 /RDWH-COL - Marshalling panel



3001877

<https://www.phoenixcontact.com/us/products/3001877>

Depth on NS 35/7,5	87.5 mm
Depth on NS 35/15	95 mm

Material specifications

Color	gray
Flammability rating according to UL 94	V0
Insulating material group	I
Insulating material	PA

Mechanical properties

Mechanical data

Open side panel	Yes
-----------------	-----

Environmental and real-life conditions

Ambient conditions

Ambient temperature (operation)	-60 °C ... 85 °C
Ambient temperature (storage/transport)	-25 °C ... 55 °C (for a short time, not exceeding 24 h, -60 °C to +70 °C)
Ambient temperature (assembly)	-5 °C ... 70 °C
Ambient temperature (actuation)	-5 °C ... 70 °C
Permissible humidity (storage/transport)	30 % ... 70 %

Standards and regulations

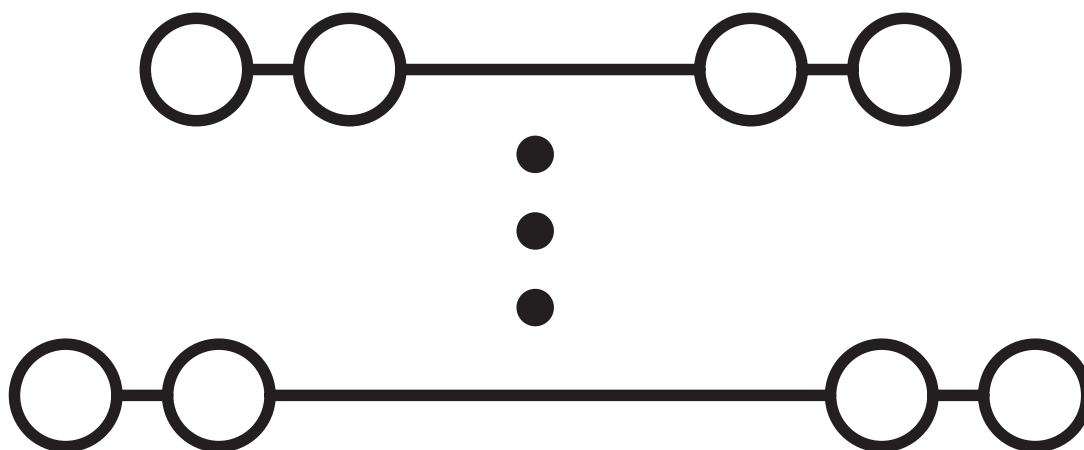
Connection in acc. with standard	IEC 60947-7-1
----------------------------------	---------------

Mounting

Mounting type	NS 35/7,5
	NS 35/15

Drawings

Circuit diagram



PTRV 8 /RDWH-COL - Marshalling panel



3001877

<https://www.phoenixcontact.com/us/products/3001877>

Approvals

To download certificates, visit the product detail page: <https://www.phoenixcontact.com/us/products/3001877>

DNV Approval ID: TAE000016Y

CSA Approval ID: 2030668	Nominal voltage U_N	Nominal current I_N	Cross section AWG	Cross section mm^2
Use group B	300 V	10 A	26 - 14	-
Use group D	300 V	10 A	26 - 14	-

IECEE CB Scheme Approval ID: NL-58817	Nominal voltage U_N	Nominal current I_N	Cross section AWG	Cross section mm^2
	250 V	8 A	-	-

EAC Approval ID: RU C-DE.BL08.B.00682

cULus Recognized Approval ID: E60425
--

KEMA-KEUR Approval ID: 71-102890	Nominal voltage U_N	Nominal current I_N	Cross section AWG	Cross section mm^2
Only flexible conductors	250 V	8 A	-	0.14 - 1.5
Only rigid conductors	250 V	8 A	-	0.14 - 2.5

cULus Recognized Approval ID: E60425
--

cULus Recognized Approval ID: E60425
--

PTRV 8 /RDWH-COL - Marshalling panel



3001877

<https://www.phoenixcontact.com/us/products/3001877>

Classifications

ECLASS

ECLASS-11.0	27141120
ECLASS-13.0	27250105

ETIM

ETIM 8.0	EC000897
----------	----------

UNSPSC

UNSPSC 21.0	39121400
-------------	----------

PTRV 8 /RDWH-COL - Marshalling panel



3001877

<https://www.phoenixcontact.com/us/products/3001877>

Environmental product compliance

China RoHS	Environmentally friendly use period: unlimited = EFUP-e
	No hazardous substances above threshold values

PTRV 8 /RDWH-COL - Marshalling panel



3001877

<https://www.phoenixcontact.com/us/products/3001877>

Accessories

DP-PTRV 8 - Spacer plate

3270166

<https://www.phoenixcontact.com/us/products/3270166>



Spacer plate, depth: 86 mm, width: 8.3 mm, height: 100 mm, color: gray

CDC-PTRV - Retaining bracket

3270167

<https://www.phoenixcontact.com/us/products/3270167>



Retaining bracket, via four PTRV single modules, pitch: 8.3 mm, depth: 71.5 mm, width: 35.6 mm, height: 71.5 mm, color: gray

PTRV 8 /RDWH-COL - Marshalling panel

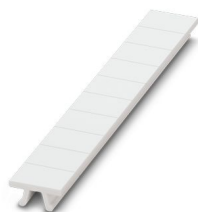
3001877

<https://www.phoenixcontact.com/us/products/3001877>

ZB 8,3:UNBEDRUCKT - Zack marker strip

0803444

<https://www.phoenixcontact.com/us/products/0803444>



Zack marker strip, Strip, white, unlabeled, can be labeled with: PLOTMARK, CMS-P1-PLOTTER, mounting type: snapped, for terminal block width: 8.3 mm, lettering field size: 10.5 x 8.3 mm

ZB 8,3,LGS:FORTL.ZAHLEN - Zack marker strip

0803480

<https://www.phoenixcontact.com/us/products/0803480>



Zack marker strip, Strip, white, labeled, can be labeled with: CMS-P1-PLOTTER, mounting type: snapped, for terminal block width: 8.3 mm, lettering field size: 10.5 x 8.3 mm

PTRV 8 /RDWH-COL - Marshalling panel



3001877

<https://www.phoenixcontact.com/us/products/3001877>

ZB 8,3,QR:FORTL.ZAHLEN - Zack marker strip

0803479

<https://www.phoenixcontact.com/us/products/0803479>

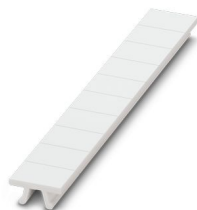


Zack marker strip, Strip, white, labeled, can be labeled with: CMS-P1-PLOTTER, mounting type: snapped, for terminal block width: 8.3 mm, lettering field size: 10.5 x 8.3 mm

ZB 8,3 CUS - Zack marker strip

8191573

<https://www.phoenixcontact.com/us/products/8191573>



Zack marker strip, Strip, white, labeled according to customer specifications, mounting type: snap into tall marker groove, for terminal block width: 8.3 mm, lettering field size: 10.5 x 8.3 mm

PTRV 8 /RDWH-COL - Marshalling panel



3001877

<https://www.phoenixcontact.com/us/products/3001877>

D-PTRV 8 WH - End cover

3270154

<https://www.phoenixcontact.com/us/products/3270154>



End cover, depth: 80.8 mm, width: 3.8 mm, height: 100 mm, color: white

D-PTRV 8 WH 1-8 - End cover

3270155

<https://www.phoenixcontact.com/us/products/3270155>



End cover, depth: 80.8 mm, width: 2.2 mm, height: 100 mm, color: white

PTRV 8 /RDWH-COL - Marshalling panel



3001877

<https://www.phoenixcontact.com/us/products/3001877>

D-PTRV 8 WH 1-8 LGS - End cover

3270240

<https://www.phoenixcontact.com/us/products/3270240>



End cover, depth: 80.8 mm, width: 2.2 mm, height: 100 mm, color: white

D-PTRV 8 WH 8-1 - End cover

3270242

<https://www.phoenixcontact.com/us/products/3270242>



End cover, depth: 80.8 mm, width: 2.2 mm, height: 100 mm, color: white

PTRV 8 /RDWH-COL - Marshalling panel



3001877

<https://www.phoenixcontact.com/us/products/3001877>

D-PTRV 8 WH 8-1 LGS - End cover

3270244

<https://www.phoenixcontact.com/us/products/3270244>



End cover, depth: 80.8 mm, width: 2.2 mm, height: 100 mm, color: white

D-PTRV 8 WH 1-16 - End cover

3270228

<https://www.phoenixcontact.com/us/products/3270228>



End cover, depth: 80.8 mm, width: 2.2 mm, height: 100 mm, color: white

PTRV 8 /RDWH-COL - Marshalling panel



3001877

<https://www.phoenixcontact.com/us/products/3001877>

D-PTRV 8 WH 1-16 LGS - End cover

3270229

<https://www.phoenixcontact.com/us/products/3270229>



End cover, depth: 80.8 mm, width: 2.2 mm, height: 100 mm, color: white

D-PTRV 8 WH 9-16 - End cover

3270211

<https://www.phoenixcontact.com/us/products/3270211>



End cover, depth: 80.8 mm, width: 2.2 mm, height: 100 mm, color: white

PTRV 8 /RDWH-COL - Marshalling panel



3001877

<https://www.phoenixcontact.com/us/products/3001877>

D-PTRV 8 WH 9-16 LGS - End cover

3270212

<https://www.phoenixcontact.com/us/products/3270212>



End cover, depth: 80.8 mm, width: 2.2 mm, height: 100 mm, color: white

D-PTRV 8 WH 17-24 - End cover

3270213

<https://www.phoenixcontact.com/us/products/3270213>



End cover, depth: 80.8 mm, width: 2.2 mm, height: 100 mm, color: white

PTRV 8 /RDWH-COL - Marshalling panel



3001877

<https://www.phoenixcontact.com/us/products/3001877>

D-PTRV 8 WH 17-24 LGS - End cover

3270214

<https://www.phoenixcontact.com/us/products/3270214>



End cover, depth: 80.8 mm, width: 2.2 mm, height: 100 mm, color: white

D-PTRV 8 WH 25-32 - End cover

3270215

<https://www.phoenixcontact.com/us/products/3270215>



End cover, depth: 80.8 mm, width: 2.2 mm, height: 100 mm, color: white

PTRV 8 /RDWH-COL - Marshalling panel



3001877

<https://www.phoenixcontact.com/us/products/3001877>

D-PTRV 8 WH 25-32 LGS - End cover

3270216

<https://www.phoenixcontact.com/us/products/3270216>



End cover, depth: 80.8 mm, width: 2.2 mm, height: 100 mm, color: white

D-PTRV 8 WH A-H - End cover

3270156

<https://www.phoenixcontact.com/us/products/3270156>



End cover, depth: 80.8 mm, width: 2.2 mm, height: 100 mm, color: white

PTRV 8 /RDWH-COL - Marshalling panel



3001877

<https://www.phoenixcontact.com/us/products/3001877>

D-PTRV 8 WH A-H LGS - End cover

3270241

<https://www.phoenixcontact.com/us/products/3270241>



End cover, depth: 80.8 mm, width: 2.2 mm, height: 100 mm, color: white

D-PTRV 8 WH H-A - End cover

3270243

<https://www.phoenixcontact.com/us/products/3270243>



End cover, depth: 80.8 mm, width: 2.2 mm, height: 100 mm, color: white

PTRV 8 /RDWH-COL - Marshalling panel

3001877

<https://www.phoenixcontact.com/us/products/3001877>



D-PTRV 8 WH H-A LGS - End cover

3270245

<https://www.phoenixcontact.com/us/products/3270245>



End cover, depth: 80.8 mm, width: 2.2 mm, height: 100 mm, color: white

NS 35/ 7,5 PERF 2000MM - DIN rail perforated

0801733

<https://www.phoenixcontact.com/us/products/0801733>



DIN rail perforated, Pack of 25 (50 m), acc. to EN 60715, material: Steel, galvanized, passivated with a thick layer, Standard profile, color: silver

PTRV 8 /RDWH-COL - Marshalling panel

3001877

<https://www.phoenixcontact.com/us/products/3001877>



NS 35/ 7,5 UNPERF 2000MM - DIN rail, unperforated

0801681

<https://www.phoenixcontact.com/us/products/0801681>



DIN rail, unperforated, Pack of 25 (50 m), acc. to EN 60715, material: Steel, galvanized, passivated with a thick layer, Standard profile, color: silver

NS 35/ 7,5 WH PERF 2000MM - DIN rail perforated

1204119

<https://www.phoenixcontact.com/us/products/1204119>



DIN rail perforated, Pack of 25 (50 m), acc. to EN 60715, material: Steel, Galvanized, white passivated, Standard profile, color: silver

PTRV 8 /RDWH-COL - Marshalling panel

3001877

<https://www.phoenixcontact.com/us/products/3001877>



NS 35/ 7,5 WH UNPERF 2000MM-VPE 10 - DIN rail, unperforated

1204122

<https://www.phoenixcontact.com/us/products/1204122>



DIN rail, unperforated, Pack of 10 (20 m), acc. to EN 60715, material: Steel, Galvanized, white passivated, Standard profile, color: silver

NS 35/ 7,5 AL UNPERF 2000MM - DIN rail, unperforated

0801704

<https://www.phoenixcontact.com/us/products/0801704>



DIN rail, unperforated, Pack of 25 (50 m), acc. to EN 60715, material: Aluminum, uncoated, Standard profile, color: silver

PTRV 8 /RDWH-COL - Marshalling panel



3001877

<https://www.phoenixcontact.com/us/products/3001877>

NS 35/ 7,5 ZN PERF 2000MM - DIN rail perforated

1206421

<https://www.phoenixcontact.com/us/products/1206421>



DIN rail perforated, Pack of 25 (50 m), acc. to EN 60715, material: Steel, galvanized, Standard profile, color: silver

NS 35/ 7,5 ZN UNPERF 2000MM - DIN rail, unperforated

1206434

<https://www.phoenixcontact.com/us/products/1206434>



DIN rail, unperforated, Pack of 25 (50 m), acc. to EN 60715, material: Steel, galvanized, Standard profile, color: silver

PTRV 8 /RDWH-COL - Marshalling panel

3001877

<https://www.phoenixcontact.com/us/products/3001877>



NS 35/ 7,5 CU UNPERF 2000MM-VPE 10 - DIN rail, unperforated

0801762

<https://www.phoenixcontact.com/us/products/0801762>



DIN rail, unperforated, Pack of 10 (20 m), acc. to EN 60715, material: Copper, uncoated, Standard profile, color: copper-colored

NS 35/ 7,5 CAP - End cap

1206560

<https://www.phoenixcontact.com/us/products/1206560>

DIN rail end piece, for DIN rail NS 35/7.5



PTRV 8 /RDWH-COL - Marshalling panel



3001877

<https://www.phoenixcontact.com/us/products/3001877>

CLIPFIX 35 - End bracket

3022218

<https://www.phoenixcontact.com/us/products/3022218>



Quick mounting end clamp for NS 35/7,5 DIN rail or NS 35/15 DIN rail, with marking option, width: 9.5 mm, color: gray

CLIPFIX 35-5 - End bracket

3022276

<https://www.phoenixcontact.com/us/products/3022276>



Quick mounting end clamp for NS 35/7,5 DIN rail or NS 35/15 DIN rail, with marking option, with parking option for FBS...5, FBS...6, KSS 5, KSS 6, width: 5.15 mm, color: gray

PTRV 8 /RDWH-COL - Marshalling panel

3001877

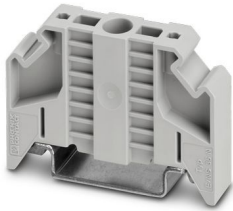
<https://www.phoenixcontact.com/us/products/3001877>

E/NS 35 N - End bracket

0800886

<https://www.phoenixcontact.com/us/products/0800886>

End clamp, width: 9.5 mm, color: gray



E/UK - End bracket

1201442

<https://www.phoenixcontact.com/us/products/1201442>

End bracket, Mounting on a DIN rail NS 32 or NS 35, material: PA, color: gray



PTRV 8 /RDWH-COL - Marshalling panel



3001877

<https://www.phoenixcontact.com/us/products/3001877>

E/UK 1 - End bracket

1201413

<https://www.phoenixcontact.com/us/products/1201413>



End clamps, for supporting the ends of double-level and three-level terminal blocks, width: 10 mm, color: gray

SZF 0-0,4X2,5 - Screwdriver

1204504

<https://www.phoenixcontact.com/us/products/1204504>



Actuation tool, for ST terminal blocks, also suitable for use as a bladed screwdriver, size: 0.4 x 2.5 x 75 mm, 2-component grip, with non-slip grip

PTRV 8 /RDWH-COL - Marshalling panel

3001877

<https://www.phoenixcontact.com/us/products/3001877>



ST-BW 0 - Actuation tool

1200135

<https://www.phoenixcontact.com/us/products/1200135>

Actuation tool, for all 1.5 mm² spring cages from PT 1,5/S and FT 1,5/S



Phoenix Contact 2024 © - all rights reserved

<https://www.phoenixcontact.com>

Phoenix Contact USA
586 Fulling Mill Road
Middletown, PA 17057, United States
(+717) 944-1300
info@phoenixcon.com