

C

6000  
3



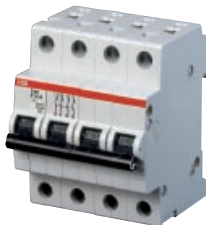
SK 018 B 01



SK 019 B 01



SK 020 B 019



SK 030 B 01

Selection table

No. of poles	rated current $I_n$ , A	order details		bbn 40 16779 EAN	price 1 piece €	price group	w'ght 1 pc. kg	pack. unit pc.
		type code	order code					
1	0.5	S 201-C 0.5	2CDS 251 001 R0984	52329 5			0.125	10/40
	1	S 201-C 1	2CDS 251 001 R0014	52331 8				
	1.6	S 201-C 1.6	2CDS 251 001 R0974	52330 1				
	2	S 201-C 2	2CDS 251 001 R0024	52332 5				
	3	S 201-C 3	2CDS 251 001 R0034	52333 2				
	4	S 201-C 4	2CDS 251 001 R0044	52334 9				
	6	S 201-C 6	2CDS 251 001 R0064	46400 0				
	8	S 201-C 8	2CDS 251 001 R0084	46410 9				
	10	S 201-C 10	2CDS 251 001 R0104	46420 8				
	13	S 201-C 13	2CDS 251 001 R0134	46430 7				
	16	S 201-C 16	2CDS 251 001 R0164	46440 6				
	20 ①	S 201-C 20	2CDS 251 001 R0204	46450 5				
	25	S 201-C 25	2CDS 251 001 R0254	46460 4				
	32 ②	S 201-C 32	2CDS 251 001 R0324	46470 3				
	40 ③	S 201-C 40	2CDS 251 001 R0404	46480 2				
	50	S 201-C 50	2CDS 251 001 R0504	55100 7				
	63	S 201-C 63	2CDS 251 001 R0634	55101 4				
2	0.5	S 202-C 0.5	2CDS 252 001 R0984	52335 6			0.250	5/20
	1	S 202-C 1	2CDS 252 001 R0014	52336 3				
	1.6	S 202-C 1.6	2CDS 252 001 R0974	52337 0				
	2	S 202-C 2	2CDS 252 001 R0024	52338 7				
	3	S 202-C 3	2CDS 252 001 R0034	52339 4				
	4	S 202-C 4	2CDS 252 001 R0044	52340 0				
	6	S 202-C 6	2CDS 252 001 R0064	46550 2				
	8	S 202-C 8	2CDS 252 001 R0084	46560 1				
	10	S 202-C 10	2CDS 252 001 R0104	46570 0				
	13	S 202-C 13	2CDS 252 001 R0134	46580 9				
	16	S 202-C 16	2CDS 252 001 R0164	46590 8				
	20	S 202-C 20	2CDS 252 001 R0204	46600 4				
	25	S 202-C 25	2CDS 252 001 R0254	46610 3				
	32	S 202-C 32	2CDS 252 001 R0324	46620 2				
	40	S 202-C 40	2CDS 252 001 R0404	46630 1				
	50	S 202-C 50	2CDS 252 001 R0504	55104 5				
	63	S 202-C 63	2CDS 252 001 R0634	55105 2				
3	0.5	S 203-C 0.5	2CDS 253 001 R0984	52341 7			0.375	3/12
	1	S 203-C 1	2CDS 253 001 R0014	52342 4				
	1.6	S 203-C 1.6	2CDS 253 001 R0974	52343 1				
	2	S 203-C 2	2CDS 253 001 R0024	52344 8				
	3	S 203-C 3	2CDS 253 001 R0034	52345 5				
	4	S 203-C 4	2CDS 253 001 R0044	52346 2				
	6	S 203-C 6	2CDS 253 001 R0064	46750 6				
	8	S 203-C 8	2CDS 253 001 R0084	46760 5				
	10	S 203-C 10	2CDS 253 001 R0104	46780 3				
	13	S 203-C 13	2CDS 253 001 R0134	46790 2				
	16	S 203-C 16	2CDS 253 001 R0164	46800 8				
	20 ①	S 203-C 20	2CDS 253 001 R0204	46810 7				
	25	S 203-C 25	2CDS 253 001 R0254	46820 6				
	32 ②	S 203-C 32	2CDS 253 001 R0324	46830 5				
	40 ③	S 203-C 40	2CDS 253 001 R0404	46840 4				
	50	S 203-C 50	2CDS 253 001 R0504	55106 9				
	63	S 203-C 63	2CDS 253 001 R0634	55107 6				
4	0.5	S 204-C 0.5	2CDS 254 001 R0984	52911 2			0.500	2
	1	S 204-C 1	2CDS 254 001 R0014	52912 9				
	1.6	S 204-C 1.6	2CDS 254 001 R0974	52913 6				
	2	S 204-C 2	2CDS 254 001 R0024	52914 3				
	3	S 204-C 3	2CDS 254 001 R0034	52915 0				
	4	S 204-C 4	2CDS 254 001 R0044	52916 7				
	6	S 204-C 6	2CDS 254 001 R0064	52917 4				
	8	S 204-C 8	2CDS 254 001 R0084	52918 1				
	10	S 204-C 10	2CDS 254 001 R0104	52919 8				
	13	S 204-C 13	2CDS 254 001 R0134	52920 4				
	16	S 204-C 16	2CDS 254 001 R0164	52921 1				
	20	S 204-C 20	2CDS 254 001 R0204	52922 8				
	25	S 204-C 25	2CDS 254 001 R0254	52923 5				
	32	S 204-C 32	2CDS 254 001 R0324	52924 2				
	40	S 204-C 40	2CDS 254 001 R0404	52925 9				
	50	S 204-C 50	2CDS 254 001 R0504	55110 6				
	63	S 204-C 63	2CDS 254 001 R0634	55111 3				

① suitable for flow-type heaters 12 kW  
② suitable for flow-type heaters 18 kW

③ suitable for flow-type heaters 21, 24 and 27 kW  
④  $U_{Bmax}$  125 V ∴ with 2 poles connected in series