

LIT 2X2-24 - Surge protection device



2804623

<https://www.phoenixcontact.com/nz/products/2804623>

Please be informed that the data shown in this PDF document is generated from our online catalog. Please find the complete data in the user documentation. Our general terms of use for downloads are valid.



Surge protection in a one-piece 6.2 mm wide DIN rail module for two floating signal circuits in 2-conductor technology. Tested in accordance with the following types of protection in Ex areas: Ex ia IIC / Ex iaD. HART-compatible.

Your advantages

- Space saving with a narrow overall width of just 6□mm
- Cost-optimized with tailored product features
- Universal use with extended nominal voltage range

Commercial data

Item number	2804623
Packing unit	10 pc
Minimum order quantity	1 pc
Sales key	CL2211
Product key	CL2211
Catalog page	Page 124 (C-4-2019)
GTIN	4046356428309
Weight per piece (including packing)	74 g
Weight per piece (excluding packing)	63 g
Country of origin	DE

LIT 2X2-24 - Surge protection device

2804623

<https://www.phoenixcontact.com/nz/products/2804623>

Technical data

Product properties

IEC test classification	C1
	C2
	C3
	D1
Type	DIN rail module, one-piece
Product type	Surge protection for MCR technology
Product family	LINETRAB
Wire pairs per module	2

Insulation characteristics

Overvoltage category	III
Pollution degree	2

Electrical properties

Nominal voltage U_N	24 V DC
-----------------------	---------

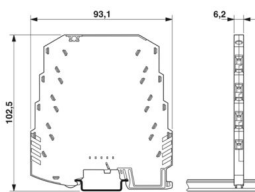
Connection data

Connection method	Screw connection
Screw thread	M3
Tightening torque	0.8 Nm
Conductor cross section flexible	0.2 mm ² ... 2.5 mm ²
Conductor cross section rigid	0.2 mm ² ... 2.5 mm ²
Conductor cross section AWG	24 ... 14

Ex data

Maximum inner capacitance C_i	typ. 1.3 nF
Max. internal inductance L_i	< 1 μ H
Max. input current I_i	350 mA ($T_4 / \leq 80^\circ\text{C}$)
	200 mA ($T_5 / \leq 50^\circ\text{C}$)
	150 mA ($T_6 / \leq 40^\circ\text{C}$)
Max. input voltage U_i	36 V DC
max. input power P_i	3.00 W
Maximum inner time factor (R_i/L_i)	0.2 μ s

Dimensions

Dimensional drawing	
---------------------	--

LIT 2X2-24 - Surge protection device



2804623

<https://www.phoenixcontact.com/nz/products/2804623>

Width	6.2 mm
Height	93.1 mm
Depth	102.5 mm (incl. DIN rail 7.5 mm)

Material specifications

Color	anthracite grey (RAL 7016)
Flammability rating according to UL 94	V-0
Insulating material	PBT
Housing material	PBT

Mechanical properties

Mechanical data

Open side panel	No
-----------------	----

Protective circuit

Direction of action	Line-Line & Line-Earth Ground
Maximum continuous voltage U_C	36 V DC
	25 V AC
Rated current	350 mA (40 °C)
Operating effective current I_C at U_C	$\leq 2 \mu A$
Residual current I_{PE}	$\leq 4 \mu A$
Nominal discharge current I_n (8/20) μs (line-line)	5 kA
Nominal discharge current I_n (8/20) μs (line-ground)	5 kA
Pulse discharge current I_{imp} (10/350) μs (line-earth)	500 A
	2 kA (in total)
Total discharge current I_{total} (8/20) μs	20 kA
Max. discharge current I_{max} (8/20) μs maximum (line-line)	10 kA
Max. discharge current I_{max} (8/20) μs maximum (line-earth)	10 kA
	20 kA (in total)
Nominal pulse current I_{an} (10/1000) μs (line-line)	50 A
Nominal pulse current I_{an} (10/1000) μs (line-earth)	50 A
	200 A (in total)
Output voltage limitation at 1 kV/ μs (line-line) spike	$\leq 60 V$
Output voltage limitation at 1 kV/ μs (line-earth) spike	$\leq 650 V$
Residual voltage at I_n (conductor-conductor)	$\leq 70 V$
Residual voltage with I_{an} (10/1000) μs (line-line)	$\leq 50 V$
Voltage protection level U_p (line-line)	$\leq 70 V$ (C2 - 10 kV / 5 kA)
	$\leq 50 V$ (C3 - 10 A)
	$\leq 55 V$ (C3 - 50 A)
	$\leq 80 V$ (D1 - 500 A)
Voltage protection level U_p (line-earth)	$\leq 650 V$ (C1 - 500 V / 250 A)
	$\leq 700 V$ (C2 - 10 kV / 5 kA)
	$\leq 650 V$ (C3 - 10 A)
	$\leq 700 V$ (C3 - 50 A)

LIT 2X2-24 - Surge protection device



2804623

<https://www.phoenixcontact.com/nz/products/2804623>

	≤ 700 V (D1 - 500 A)
Response time t_A (line-line)	≤ 1 ns
Response time t_A (line-earth)	≤ 100 ns
Input attenuation aE, sym.	typ. 0.7 dB (1 MHz/50 Ω)
	typ. 0.3 dB (350 kHz/150 Ω)
Cut-off frequency f_g (3 dB), sym. in 50 Ω system	typ. 6 MHz
Cut-off frequency f_g (3 dB), sym. in 150 Ω system	typ. 2 MHz
Capacity	≤ 1.3 nF (per channel)
Resistance per path	3.3 Ω ±20 %
Surge protection fault message	none
Max. required back-up fuse	315 mA (T)
Impulse durability (line-line)	C2 - 10 kV / 5 kA
	C3 - 50 A
	D1 - 500 A
Impulse durability (line-earth)	C1 - 500 V / 250 A
	C2 - 10 kV / 5 kA
	C3 - 50 A
	D1 - 500 A
Alternating current carrying capacity (line-earth)	5 A - 1 s

Environmental and real-life conditions

Ambient conditions

Degree of protection	IP20
Ambient temperature (operation)	-40 °C ... 80 °C
Ambient temperature (storage/transport)	-40 °C ... 80 °C
Altitude	≤ 2000 m (amsl)

Approvals

Conformity/Approvals

ATEX	⊕ II 1 G Ex ia IIC T4...T6
	⊕ II 1 D Ex iaD 20 T85°C...135°C
IECEX	Ga Ex ia IIC T4...T6
	Ex iaD 20 T85 °C...T135 °C

Standards and regulations

Standards/specifications	EN 61643-21
Note	A2:2013
Standards/specifications	EN 60079-0
Note	2018
Standards/specifications	EN 60079-11
Note	2012
Standards/specifications	IEC 60079-0
Note	2017

LIT 2X2-24 - Surge protection device



2804623

<https://www.phoenixcontact.com/nz/products/2804623>

Standards/specifications	IEC 60079-11
Note	2011

Mounting

Mounting type	DIN rail: 35 mm
---------------	-----------------

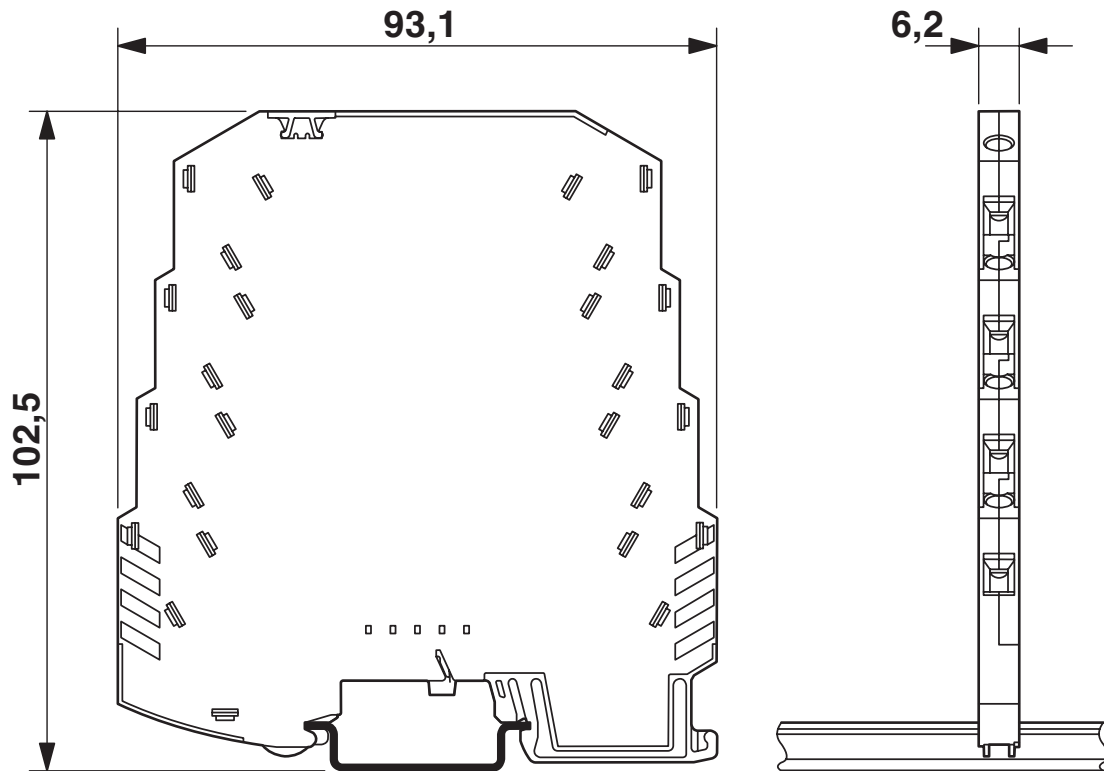
LIT 2X2-24 - Surge protection device

2804623

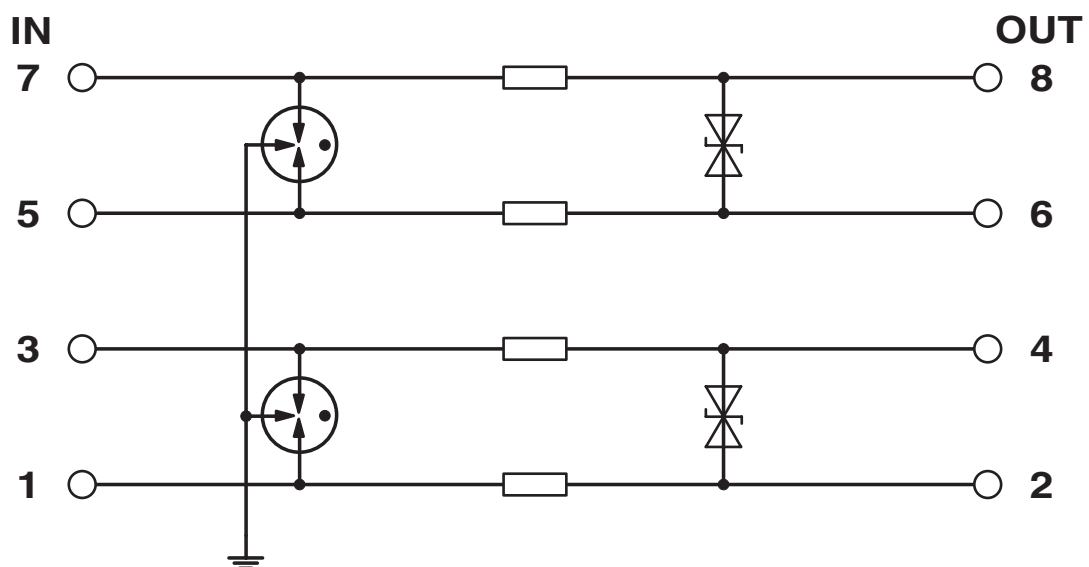
<https://www.phoenixcontact.com/nz/products/2804623>

Drawings

Dimensional drawing



Circuit diagram



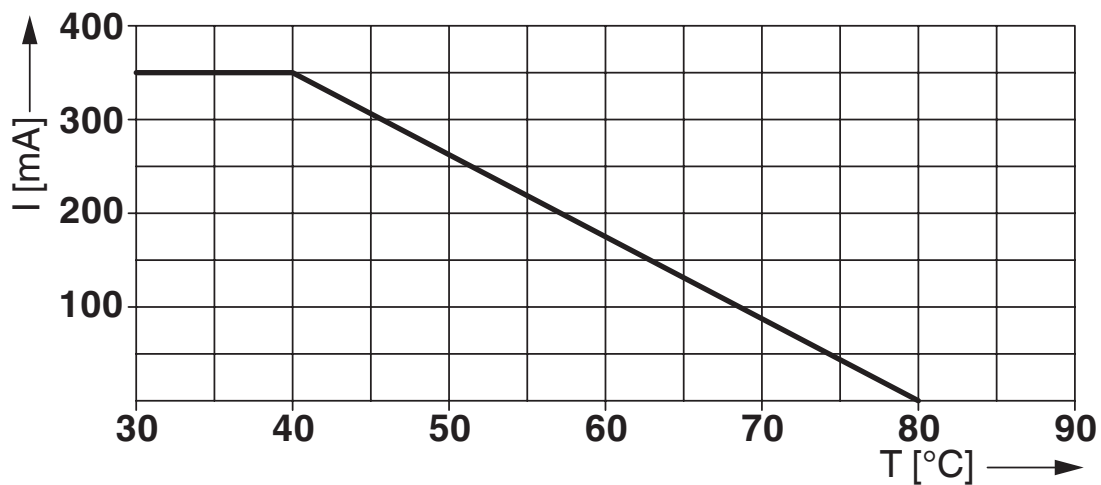
LIT 2X2-24 - Surge protection device



2804623

<https://www.phoenixcontact.com/nz/products/2804623>

Diagram



LIT 2X2-24 - Surge protection device



2804623

<https://www.phoenixcontact.com/nz/products/2804623>

Approvals

To download certificates, visit the product detail page: <https://www.phoenixcontact.com/nz/products/2804623>



EAC

Approval ID: EAC-Zulassung



DNV GL

Approval ID: TAE00001N8



EAC

Approval ID: RU C-DE.*09.B.00169



UL Listed

Approval ID: FILE E 138168

UAE-RoHS

Approval ID: 23-10-88889



ATEX

Approval ID: KEMA 09ATEX0051 X



EAC Ex

Approval ID: RU C-DE.**87.B.00420



IECEx

Approval ID: IECEx KEM 09.0018X



CCC

Approval ID: 2020322316000816



NEPSI-EX

Approval ID: GYJ20.1176X



CCC

Approval ID: 2020322316000816

LIT 2X2-24 - Surge protection device

2804623

<https://www.phoenixcontact.com/nz/products/2804623>



UKCA-EX

Approval ID: DEKRA 21UKEX0233 X

LIT 2X2-24 - Surge protection device



2804623

<https://www.phoenixcontact.com/nz/products/2804623>

Classifications

ECLASS

ECLASS-11.0	27130807
ECLASS-13.0	27171501

ETIM

ETIM 9.0	EC001625
----------	----------

UNSPSC

UNSPSC 21.0	39121620
-------------	----------

LIT 2X2-24 - Surge protection device



2804623

<https://www.phoenixcontact.com/nz/products/2804623>

Environmental product compliance

REACH SVHC	Lead 7439-92-1
China RoHS	Environmentally Friendly Use Period = 50 years
	For information on hazardous substances, refer to the manufacturer's declaration available under "Downloads"

Phoenix Contact 2024 © - all rights reserved

<https://www.phoenixcontact.com>

PHOENIX CONTACT Ltd

Unit 15C, 906-930 Great South Road, Penrose

Auckland 1061

0508 474 636

sales@phoenixcontact.co.nz