

FL RUGGED BOX OMNI-2 - Control box



2701439

<https://www.phoenixcontact.com/pc/products/2701439>

Please be informed that the data shown in this PDF document is generated from our online catalog. Please find the complete data in the user documentation. Our general terms of use for downloads are valid.



Control box set for constructing wireless systems for industrial applications, incl. three 2.4/5 GHz omnidirectional antennas that can be directly screwed on, IP66, with DIN rail, plugs, and screw connections, with 100 V ... 240 V power supply unit, without devices

Commercial data

Item number	2701439
Packing unit	1 pc
Minimum order quantity	1 pc
Product key	DNN2WZ
Catalog page	Page 394 (C-6-2019)
GTIN	4046356752190
Weight per piece (including packing)	2,083.4 g
Weight per piece (excluding packing)	2,043.2 g
Customs tariff number	85177100
Country of origin	DE

FL RUGGED BOX OMNI-2 - Control box



2701439

<https://www.phoenixcontact.com/pc/products/2701439>

Set consists of

ANT-OMNI-2459-02 - Antenna

2701408

<https://www.phoenixcontact.com/pc/products/2701408>



Omnidirectional antenna for control cabinet mounting, frequency band: 2.4 GHz / 5 GHz, gain: 2.5 dBi / 5 dBi, degree of protection: IP68, connection: N (male)

RAD-PIG-EF316-N-RSMA - Antenna cable

2701402

<https://www.phoenixcontact.com/pc/products/2701402>



Antenna cable for control cabinet feed-through, outside diameter: 3.2 mm (0.126 in.), inner conductor: stranded, attenuation: 0.6 / 0.9 / 1.4 dB at 0.9 / 2.4 / 5.8 GHz, connection: N (female) -> RSMA (male), cable length: 0.5 m (1.6 ft.)

FL RUGGED BOX OMNI-2 - Control box



2701439

<https://www.phoenixcontact.com/pc/products/2701439>

STEP-PS/ 1AC/24DC/0.5 - Power supply unit

2868596

<https://www.phoenixcontact.com/pc/products/2868596>

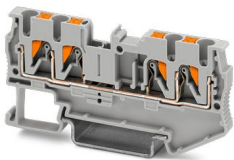


Primary-switched STEP POWER power supply for DIN rail and direct mounting, input: 1-phase, output: 24 V DC/0.5 A

PT 2,5-QUATTRO - Feed-through terminal block

3209578

<https://www.phoenixcontact.com/pc/products/3209578>



Feed-through terminal block, nom. voltage: 800 V, nominal current: 24 A, number of connections: 4, connection method: Push-in connection, Rated cross section: 2.5 mm², cross section: 0.14 mm² - 4 mm², mounting type: NS 35/7,5, NS 35/15, color: gray

FL RUGGED BOX OMNI-2 - Control box



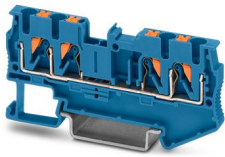
2701439

<https://www.phoenixcontact.com/pc/products/2701439>

PT 2,5-QUATTRO BU - Feed-through terminal block

3209581

<https://www.phoenixcontact.com/pc/products/3209581>



Feed-through terminal block, nom. voltage: 800 V, nominal current: 24 A, number of connections: 4, connection method: Push-in connection, Rated cross section: 2.5 mm², cross section: 0.14 mm² - 4 mm², mounting type: NS 35/7,5, NS 35/15, color: blue

PT 2,5-QUATTRO-PE - Ground terminal

3209594

<https://www.phoenixcontact.com/pc/products/3209594>



Ground terminal, number of connections: 4, connection method: Push-in connection, Rated cross section: 2.5 mm², cross section: 0.14 mm² - 4 mm², mounting type: NS 35/7,5, NS 35/15, color: green-yellow

FL RUGGED BOX OMNI-2 - Control box



2701439

<https://www.phoenixcontact.com/pc/products/2701439>

VS-08-RJ45-5-Q/IP20 - RJ45 connector

1656725

<https://www.phoenixcontact.com/pc/products/1656725>



RJ45 connector, design: RJ45, degree of protection: IP20, number of positions: 8, 1 Gbps, CAT5, material: Plastic, connection method: Insulation displacement connection, connection cross section: AWG 26- 23, cable outlet: straight, color: traffic grey A RAL 7042, Ethernet

FL RUGGED BOX OMNI-2 - Control box



2701439

<https://www.phoenixcontact.com/pc/products/2701439>

Technical data

Product properties

Product type	Control box
--------------	-------------

Dimensions

Width	174 mm
Height	254 mm
Depth	137 mm

Material specifications

Housing material	Polycarbonate
------------------	---------------

Environmental and real-life conditions

Ambient conditions

Degree of protection	IP66
----------------------	------

FL RUGGED BOX OMNI-2 - Control box



2701439

<https://www.phoenixcontact.com/pc/products/2701439>

Approvals

To download certificates, visit the product detail page: <https://www.phoenixcontact.com/pc/products/2701439>



EAC

Approval ID: RU*DE*08.B.00731/19

FL RUGGED BOX OMNI-2 - Control box



2701439

<https://www.phoenixcontact.com/pc/products/2701439>

Classifications

ECLASS

ECLASS-11.0

27180590

ETIM

ETIM 8.0

EC000261

UNSPSC

UNSPSC 21.0

31261500

FL RUGGED BOX OMNI-2 - Control box



2701439

<https://www.phoenixcontact.com/pc/products/2701439>

Environmental product compliance

REACH SVHC	Lead 7439-92-1
China RoHS	Environmentally Friendly Use Period = 50 years
	For information on hazardous substances, refer to the manufacturer's declaration available under "Downloads"

Phoenix Contact 2024 © - all rights reserved

<https://www.phoenixcontact.com>

PHOENIX CONTACT GmbH & Co. KG

Flachsmarktstraße 8

D-32825 Blomberg

+49 (0) 5235-3 00

info@phoenixcontact.com