

## NEMA Motor Data



Ordering data : **1LE2221-4DB21-2AA3**

Client order no. :  
Order no. :  
Offer no. :  
Remarks :

Item no. :  
Consignment no. :  
Project :

Nameplate Data	Mounting and motor protection
----------------	-------------------------------

Type	GP100 - NEMA Premium Efficiency		
HP	150.0	Rating	Cont.
Voltage	(12) 460V STD, 60Hz	Ins. Class	Class F (Standard)
Amps	170.0 A	S.F.	1.15
FL RPM	1785	Amb. Temp.	40 deg C
FL Efficiency	95.8 %	Temp. Rise	Class B
FRAME	445TS	kVA Code	G
DE AFBMA	80BC03JP30	NEMA Des	B
ODE AFBMA	80BC02JPP30	Mtr WT	1637.03
60 Hertz	3 Ph	TEFC	IP 54

Type of construction	( A ) Foot mounted - End shield
Motor protection	(A) No winding protection
Terminal box design	(3) Mounting - F-1

Bearing Data		
--------------	--	--

	DE	ODE
Bearing Size	6316 Z C3 S0	6216 ZZ C3 S0
Bearing Type	Ball Bearing	Ball Bearing
AFBMA	80BC03JP30	80BC02JPP30

Typical Performance Data					
--------------------------	--	--	--	--	--

Load	No Load	1/2	3/4	Full Load	LRC
Efficiency		95.7 %	96.0 %	95.8 %	
Power Factor		78.0	84.0	86.0	
Current (A)	52.0 A	94.1 A	130.6 A	170.0 A	1085.0 A
Inverter Duty	VT	20:1	CT	4:1	

Mechanical Data					
-----------------	--	--	--	--	--

SAFE STALL TIME	HOT (s)	20	COLD (s)	30
Rtr wt (lbs)	447.23	Rtr WK2	44.6	
FLT (lb-ft)	441.000	LRT	150	BDT 200
Ext Load Inertia (WK2) Capability	105.0 lb-ft <sup>2</sup>			

Typical Noise Data										
--------------------	--	--	--	--	--	--	--	--	--	--

A-weighted Sound	Octave Band Center Frequencies Hertz (Hz)									
Pressure Level	125	250	500	1000	2000	4000	8000	SPL	73	
at 3 feet	54	64	70	67	66	59	49	SPwrL	84	

Wiring Connection Information					
-------------------------------	--	--	--	--	--

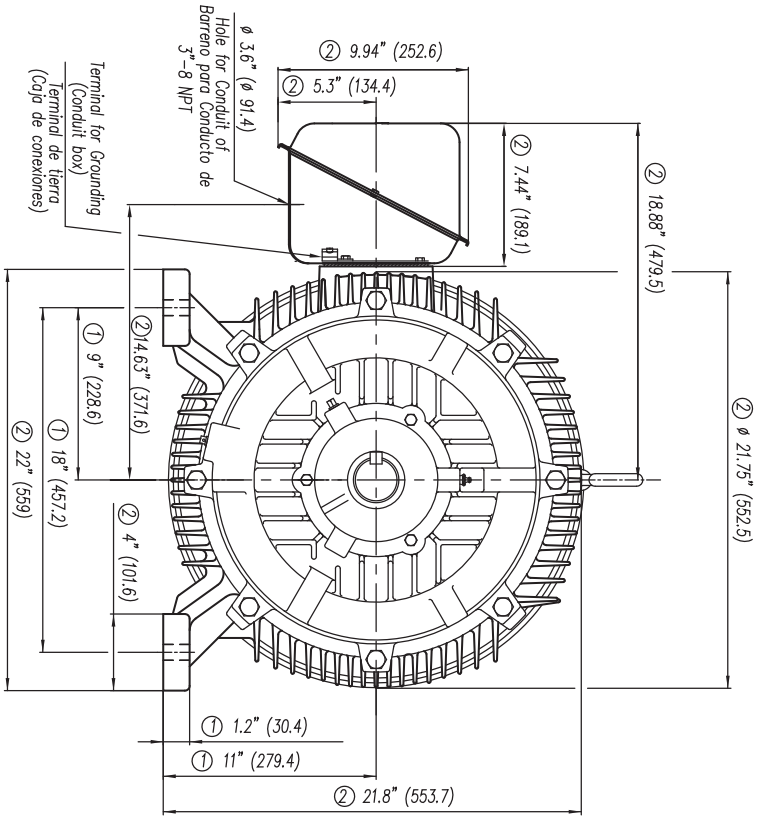
Description	3 PHASE - 3 LEAD - DELTA				
Voltage	L1	L2	L3	Connected together	
-----	-----	-----	-----	-----	-
-----	T1	T2	T3	-----	Δ

Special design :
------------------

Lubrication Information	
-------------------------	--

Manufacturer	Mobil Polyrex EM or equal
Type	Polyurea (standard)
DE Capacity (oz.)	7.50
ODEnd Capacity (oz.)	6.00

Relubricate bearings every six months (more frequent if conditions require). See Instruction Manual.

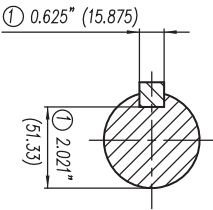


- ① Tolerances According to NEMA Std.
- ② All these dimensions corresponding to assemblies and castings shall have a tolerance as per DIN standard 1686-GTB-19.
- ③ Not According to NEMA Std.

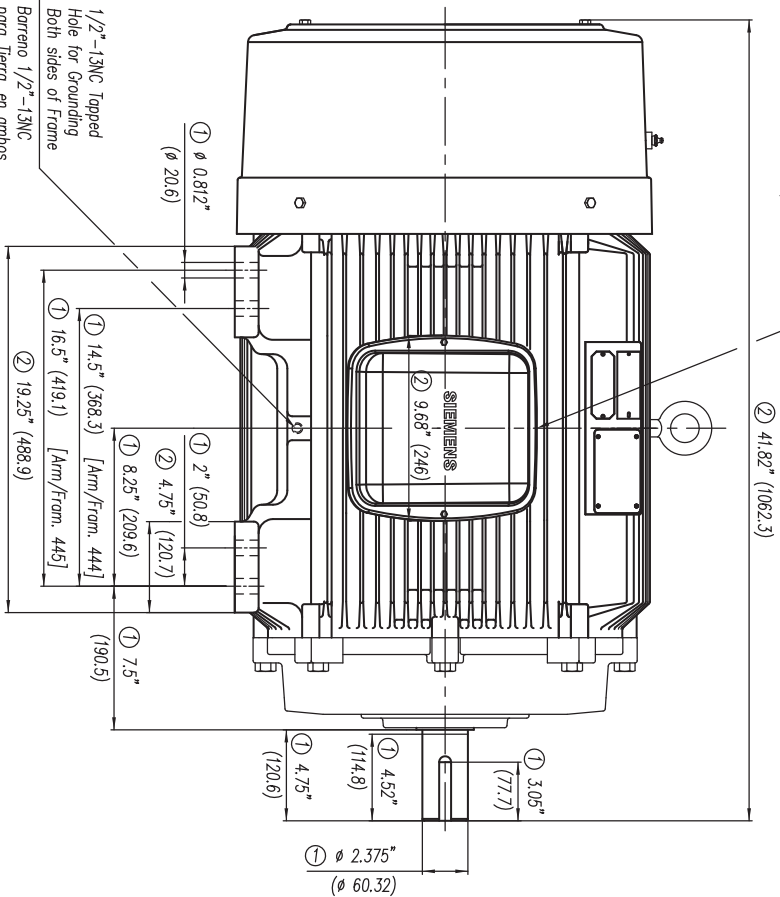
**CERTIFIED PRINT / CERTIFICACION**

OSI/OPERAZIONE		SIGNIFICAZIONE	
№	REV	DATA/REV	№

**Keyseat detail**  
**Detalle Cuñero**



Conduit Box may be rotated in steps of 90 Degrees.  
La caja de conexiones puede ser rotada en pasos de 90°



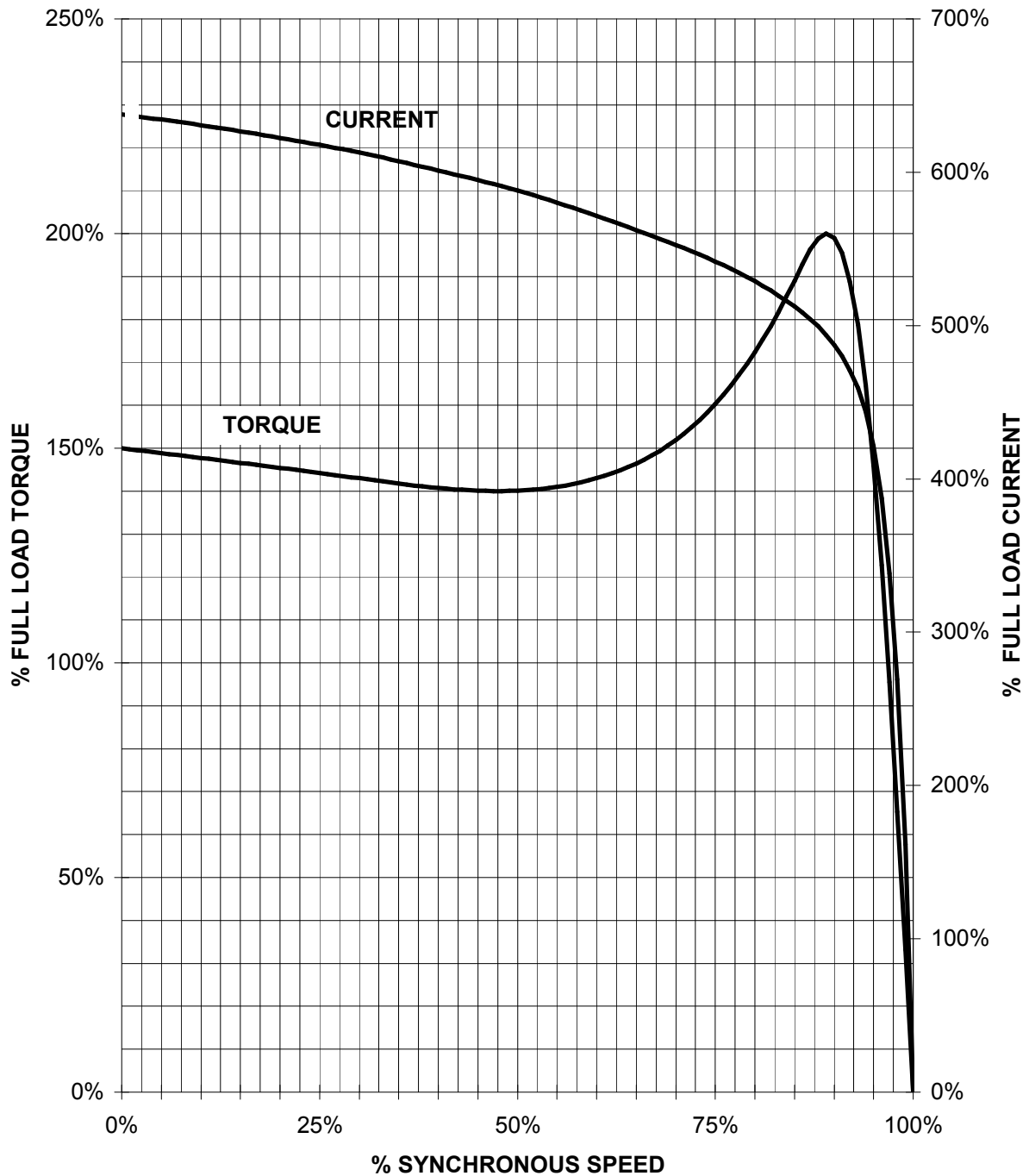
1/2"-13NC Tapped Hole for Grounding Both sides of Frame  
Barreno 1/2"-13NC para Tierra, en ambos lados de la Carcasa

Tol. in mm, acc. to Tol. in mm, según DIN-1686-GTB-19	Over/desde to/hasta	18	30	50	80	120	180	250	315	400	500	630
		± 4.5	± 4.7	± 5	± 5.5	± 6	± 6.5	± 7	± 7.5	± 8	± 8.5	± 10
European Projection/Proyeccion Europea	Dim. in inches/dim. en pulg.											
Modific.	Date/Fecha											
	Name/Nombre											
	Drawn/Elab.											
	Check/Rev.											
	Std/Ctd/Aut.											
<b>SIEMENS</b>		<b>GUADALAJARA FACTORY</b>										
<b>Outline/Dimensiones</b>		<b>New NEMA Motors (TS) Short Shaft/ Eje corto</b>										
Type/ Tipo:		GP10 y GP100 444/445TS FRAME (Epoct & mNP)										
Ref. 3MSE 750 0635		Rep. 3MSE 750 1500										
Scale/Escala		-/-										

# SIEMENS INDUSTRY, INC.

HP 150    VOLTS < 600V    RPM 1800    TYPE GP100  
HZ 60    PHASE 3    FRAME 445TS    NEMA B

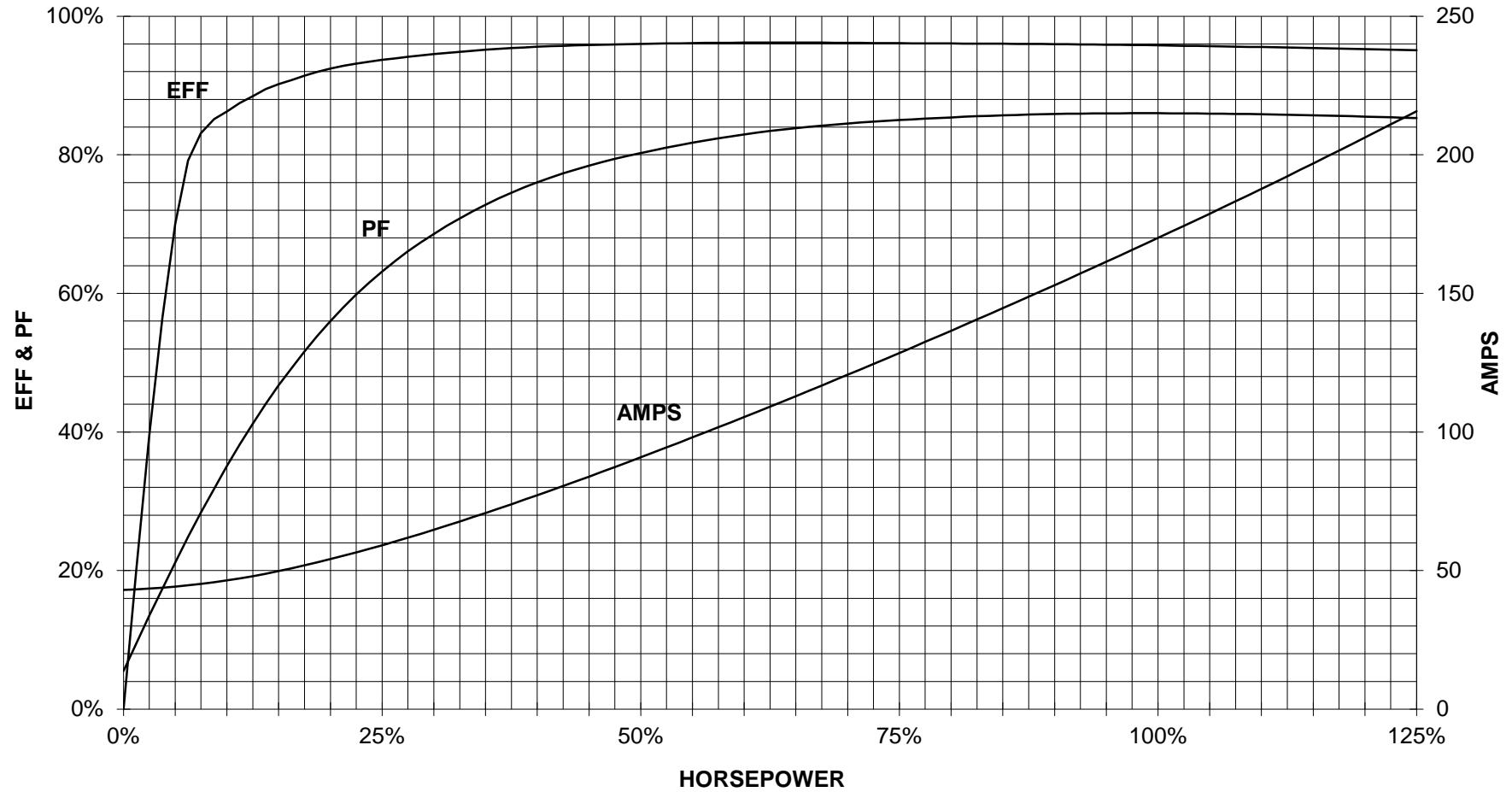
## TORQUE & CURRENT VS. SPEED



CUSTOMER: \_\_\_\_\_ ORDER#: \_\_\_\_\_

150 HP 1800 RPM 445TS FRAME 460 VOLTS 3 PHASE NEMA DESIGN B

**SIEMENS INDUSTRY, INC.**  
**PERFORMANCE CURVE**  
**GP100**



CUSTOMER: \_\_\_\_\_ ORDER #: \_\_\_\_\_

PERFORMANCE BASED ON DESIGN CALCULATIONS. SUBJECT TO CHANGE WITHOUT NOTICE.

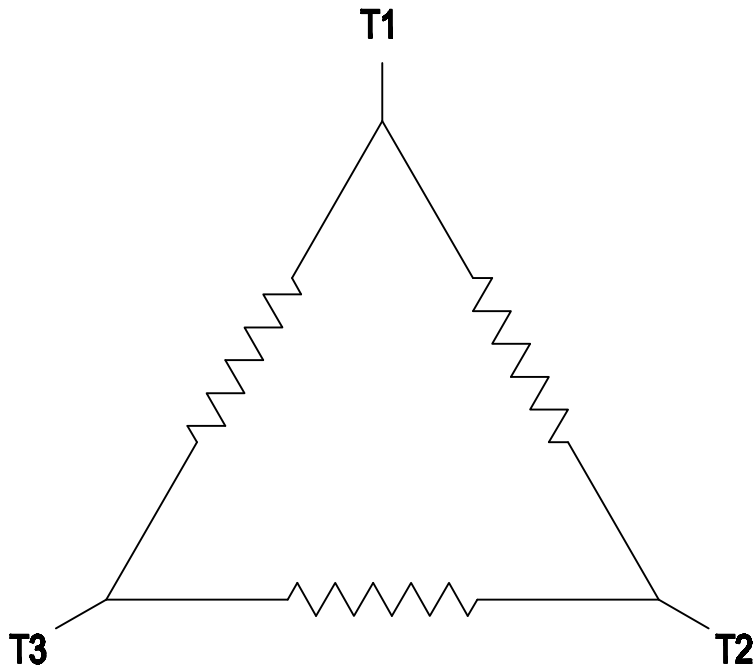
REV. 1

2

1

### 3 PHASE - 3 LEADS - DELTA

L1	L2	L3	CONN.
T1	T2	T3	△



B

B

A

A

THIS IS A CAD DRAWING  
DO NOT MAKE MANUAL CHANGES

01 | 09-27-07

TYPE

-CONFIDENTIAL-

PROPERTY OF

Siemens Energy & Automation, Inc.  
Industrial Motor Division - Little Rock, AR

FRAME

HP

NAME  
WIRING DIAGRAM

VOLTS

RPM

HZ

PH

Customer

3

PO #

SO #

DRAWN	9.24.07	DATE	JRH
CHECKED		DATE	
APP		DATE	

SHEET  
1 OF 1

Sim. To

PART NO.  
51-382-114-504

A

2

1