

NEMA Motor Data



Ordering data : **1LE2221-4DA21-2AA3**

Client order no. :
Order no. :
Offer no. :
Remarks :

Item no. :
Consignment no. :
Project :

Nameplate Data	Mounting and motor protection
----------------	-------------------------------

Type	GP100 - NEMA Premium Efficiency		
HP	150.0	Rating	Cont.
Voltage	(12) 460V STD, 60Hz	Ins. Class	Class F (Standard)
Amps	164.0 A	S.F.	1.15
FL RPM	3575	Amb. Temp.	40 deg C
FL Efficiency	95.0 %	Temp. Rise	Class B
FRAME	445TS	kVA Code	G
DE AFBMA	80BC03JP30	NEMA Des	B
ODE AFBMA	80BC02JPP30	Mtr WT	1542.03
60 Hertz	3 Ph	TEFC	IP 54

Type of construction	(A) Foot mounted - End shield
Motor protection	(A) No winding protection
Terminal box design	(3) Mounting - F-1

Bearing Data		
	DE	ODE
Bearing Size	6316 Z C3 S0	6216 ZZ C3 S0
Bearing Type	Ball Bearing	Ball Bearing
AFBMA	80BC03JP30	80BC02JPP30

Typical Performance Data					
--------------------------	--	--	--	--	--

Load	No Load	1/2	3/4	Full Load	LRC
Efficiency		94.2 %	95.0 %	95.0 %	
Power Factor		84.0	89.0	90.0	
Current (A)	37.0 A	88.7 A	124.6 A	164.0 A	1085.0 A
Inverter Duty	VT	20:1	CT	4:1	

Mechanical Data				
-----------------	--	--	--	--

SAFE STALL TIME	HOT (s)	15	COLD (s)	18
Rtr wt (lbs)	330.30	Rtr WK2	25.0	
FLT (lb-ft)	220.000	LRT	120	BDT 200
Ext Load Inertia (WK2) Capability	105.0 lb-ft ²			

Typical Noise Data									
--------------------	--	--	--	--	--	--	--	--	--

A-weighted Sound	Octave Band Center Frequencies Hertz (Hz)								
Pressure Level	125	250	500	1000	2000	4000	8000	SPL	79
at 3 feet	50	67	71	74	74	70	59	SPwrL	90

Wiring Connection Information					
-------------------------------	--	--	--	--	--

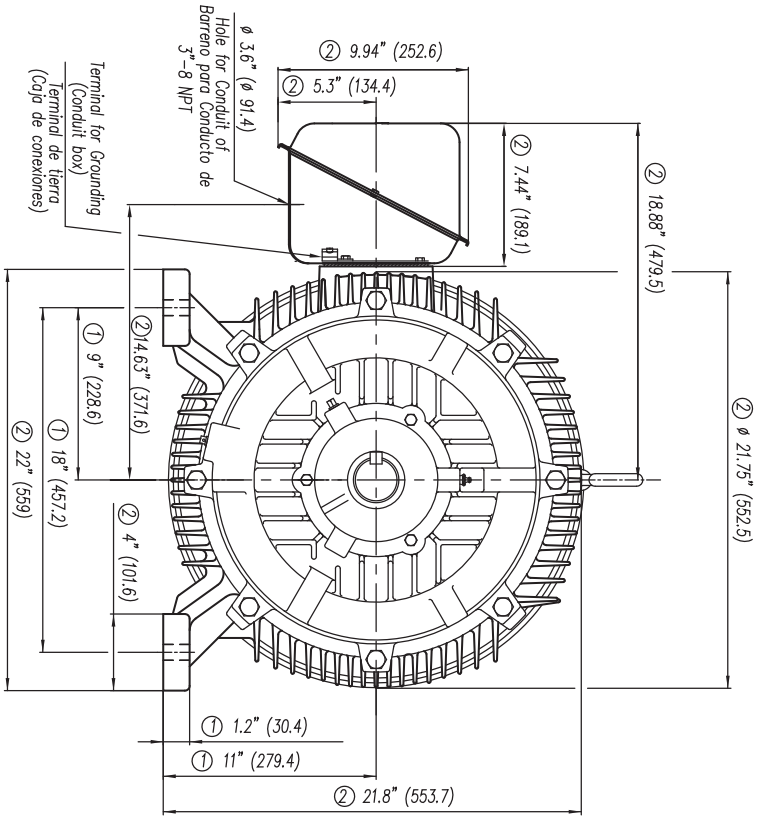
Description	3 PHASE - 3 LEAD - DELTA				
Voltage	L1	L2	L3	Connected together	
-----	-----	-----	-----	-----	-
-----	T1	T2	T3	-----	Δ

Special design :

Lubrication Information	
-------------------------	--

Manufacturer	Mobil Polyrex EM or equal
Type	Polyurea (standard)
DE Capacity (oz.)	7.50
ODEnd Capacity (oz.)	6.00

Relubricate bearings every six months (more frequent if conditions require). See Instruction Manual.

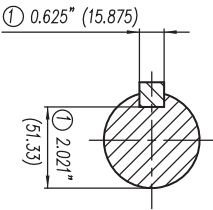


- ① Tolerances According to NEMA Std.
- ② All these dimensions corresponding to assemblies and castings shall have a tolerance as per DIN standard 1686-GTB-19.
- ③ Not According to NEMA Std.

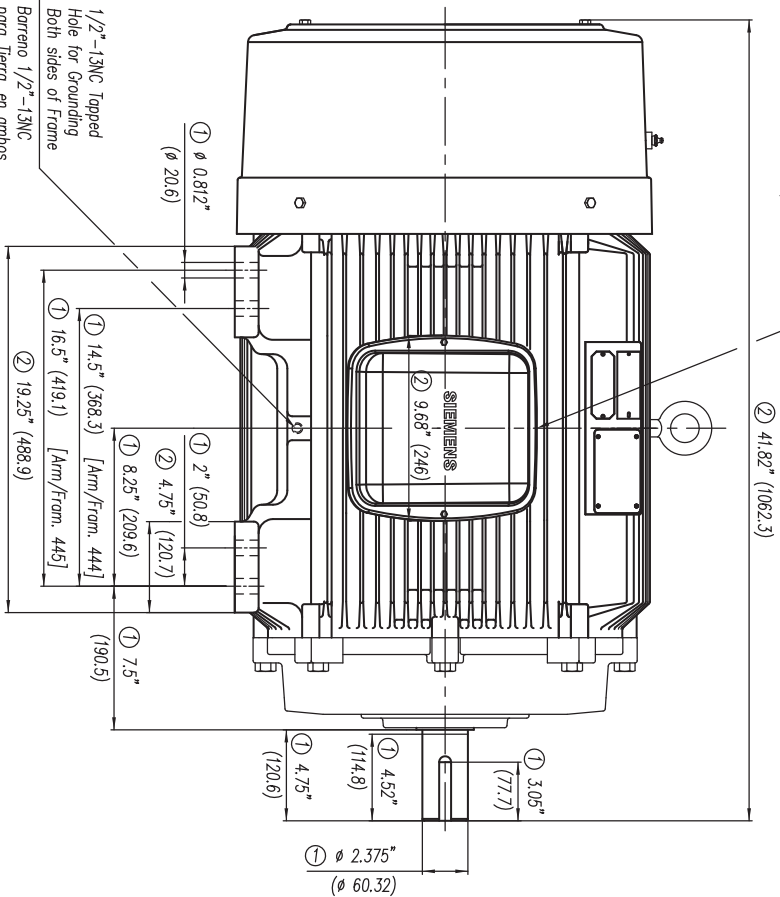
CERTIFIED PRINT / CERTIFICACION

PART NUMBER		SIEMENS CENTER	
NO.	REV.	DATE	BY

Keyseat detail
Detalle Cuñero



Conduit Box may be rotated in steps of 90 Degrees.
La caja de conexiones puede ser rotada en pasos de 90°



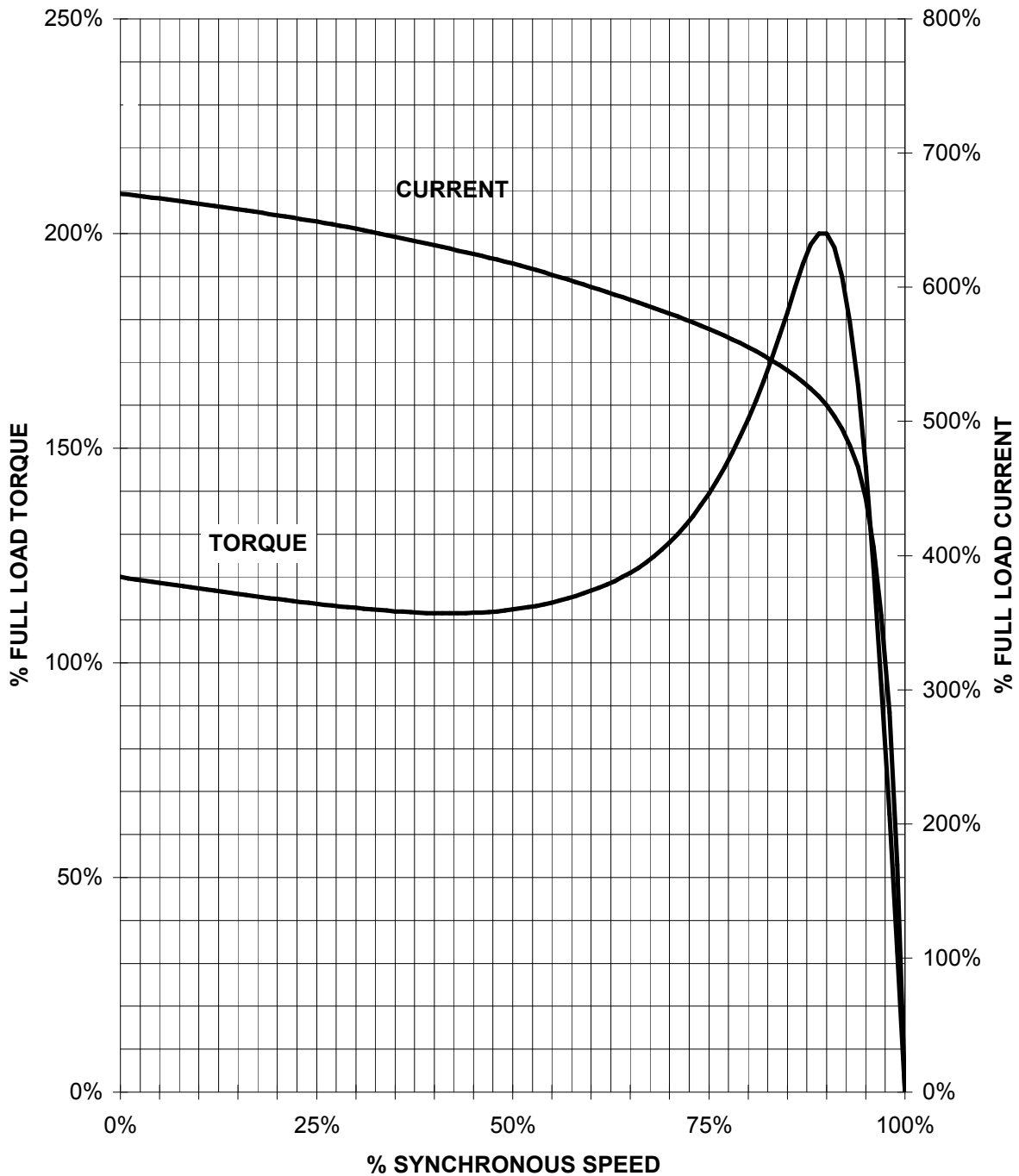
1/2"-13NC Tapped Hole for Grounding Both sides of Frame
Barreno 1/2"-13NC para Tierra, en ambos lados de la Carcasa

Tol. in mm, acc. to Tol. in mm, según DIN-1686-GTB-19	Over/desde to/hasta	18	30	50	80	120	180	250	315	400	500	630
		± 4.5	± 4.7	± 5	± 5.5	± 6	± 6.5	± 7	± 7.5	± 8	± 8.5	± 10
European Projection/Proyección Europea	Dim. in inches/dim. en pulg.											
Modific.	Date/Fecha											
	Name/Nombre											
	Drawn/Elab.											
	Check/Rev.											
	Std/Ctd/Aut.											
SIEMENS		GUADALAJARA FACTORY										
Outline/Dimensiones		New NEMA Motors (TS) Short Shaft/ Eje corto										
		Type/ Tipo: GP10 y GP100 444/445TS FRAME (Epoct & mNP)										
		Ref. 3MSE 750 0635 Rep. 150										
		Scale/Escala: -/-										

SIEMENS INDUSTRY, INC.

HP 150 VOLTS < 600V RPM 3600 TYPE GP100
HZ 60 PHASE 3 FRAME 445TS NEMA B

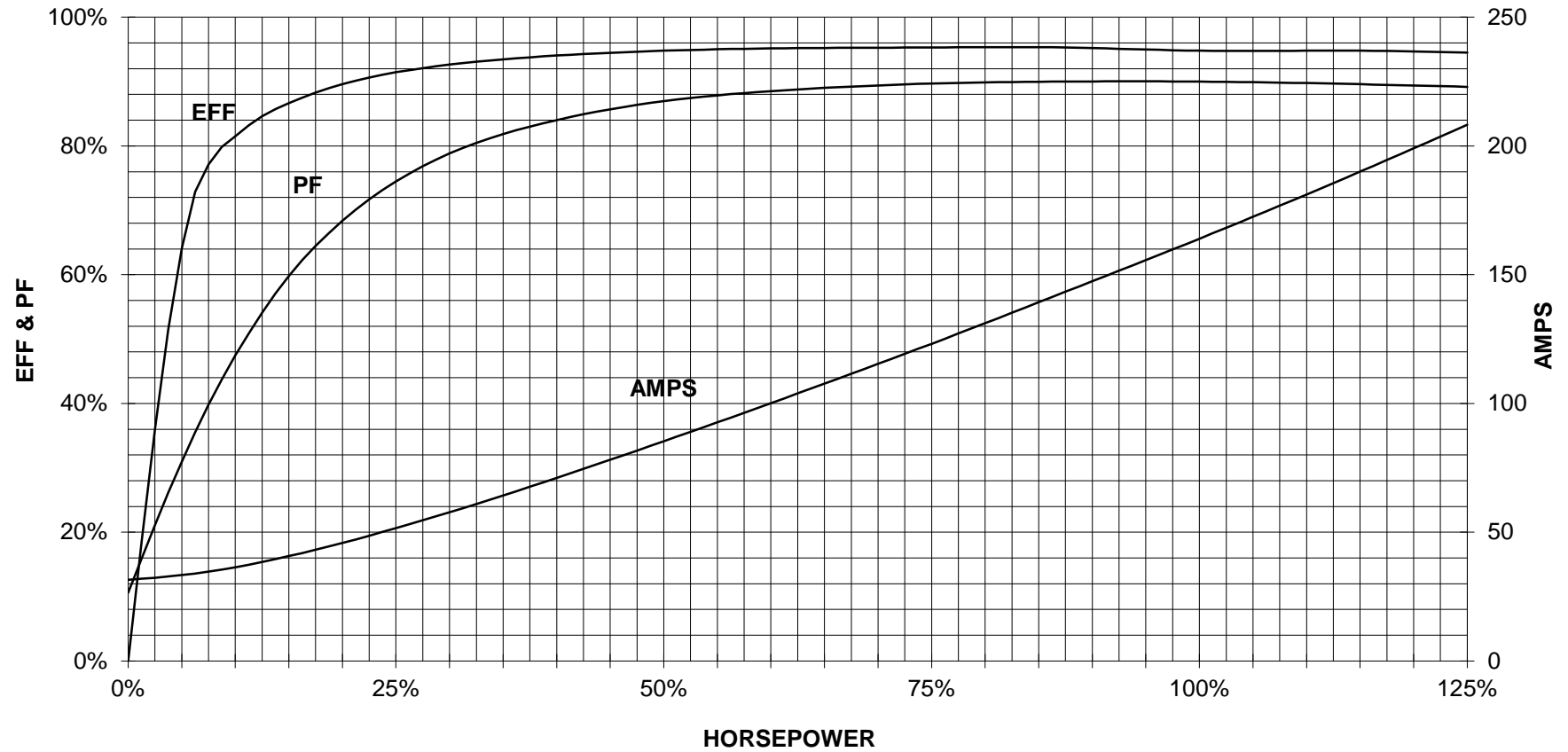
TORQUE & CURRENT VS. SPEED



CUSTOMER: _____ ORDER#: _____

150 HP 3600 RPM 445TS FRAME 460 VOLTS 3 PHASE NEMA DESIGN B

SIEMENS INDUSTRY, INC.
PERFORMANCE CURVE
GP100



CUSTOMER _____ ORDER # _____ PO # _____

PERFORMANCE BASED ON DESIGN CALCULATIONS. SUBJECT TO CHANGE WITHOUT NOTICE.

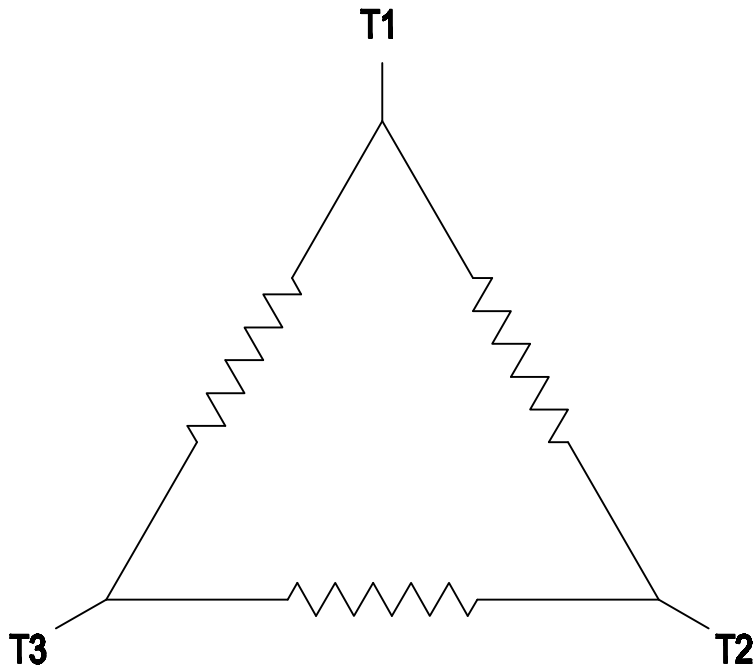
REV. 1

2

1

3 PHASE - 3 LEADS - DELTA

L1	L2	L3	CONN.
T1	T2	T3	△



B

B

A

A

THIS IS A CAD DRAWING
DO NOT MAKE MANUAL CHANGES

01 | 09-27-07

TYPE

-CONFIDENTIAL-

PROPERTY OF

Siemens Energy & Automation, Inc.
Industrial Motor Division - Little Rock, AR

FRAME

HP

NAME
WIRING DIAGRAM

VOLTS

RPM

HZ

PH

3

Customer

DRAWN 9.24.07 DATE JRH

CHECKED DATE

APP DATE

SHEET
1 OF 1

Sim. To

PART NO.
51-382-114-504

A

2

1