

## NEMA Motor Data



Ordering data : **1LE2221-4CB31-2AA3**

Client order no. :  
Order no. :  
Offer no. :  
Remarks :

Item no. :  
Consignment no. :  
Project :

Nameplate Data	Mounting and motor protection
----------------	-------------------------------

Type	GP100 - NEMA Premium Efficiency		
HP	200.0	Rating	Cont.
Voltage	(12) 460V STD, 60Hz	Ins. Class	Class F (Standard)
Amps	228.0 A	S.F.	1.15
FL RPM	1785	Amb. Temp.	40 deg C
FL Efficiency	96.2 %	Temp. Rise	Class B
FRAME	447T	kVA Code	G
DE AFBMA	100RU03M0	NEMA Des	B
ODE AFBMA	80BC03JP30	Mtr WT	2245.04
60 Hertz	3 Ph	TEFC	IP 54

Type of construction	( A ) Foot mounted - End shield
Motor protection	(A) No winding protection
Terminal box design	(3) Mounting - F-1

Bearing Data		
--------------	--	--

	DE	ODE
Bearing Size	NU 320	6316 Z C3 S0
Bearing Type	Roller Bearing	Ball Bearing
AFBMA	100RU03M0	80BC03JP30

Typical Performance Data					
--------------------------	--	--	--	--	--

Load	No Load	1/2	3/4	Full Load	LRC
Efficiency		96.2 %	96.5 %	96.2 %	
Power Factor		75.0	83.0	85.0	
Current (A)	73.0 A	129.8 A	175.4 A	228.0 A	1450.0 A
Inverter Duty	VT	20:1	CT	4:1	

Mechanical Data				
-----------------	--	--	--	--

SAFE STALL TIME	HOT (s)	18	COLD (s)	25
Rtr wt (lbs)	574.20	Rtr WK2	56.5	
FLT (lb-ft)	588.000	LRT	160	BDT 200
Ext Load Inertia (WK2) Capability	105.0 lb-ft <sup>2</sup>			

Typical Noise Data									
--------------------	--	--	--	--	--	--	--	--	--

A-weighted Sound	Octave Band Center Frequencies Hertz (Hz)								
Pressure Level	125	250	500	1000	2000	4000	8000	SPL	74
at 3 feet	51	63	70	67	68	60	50	SPwrL	85

Wiring Connection Information					
-------------------------------	--	--	--	--	--

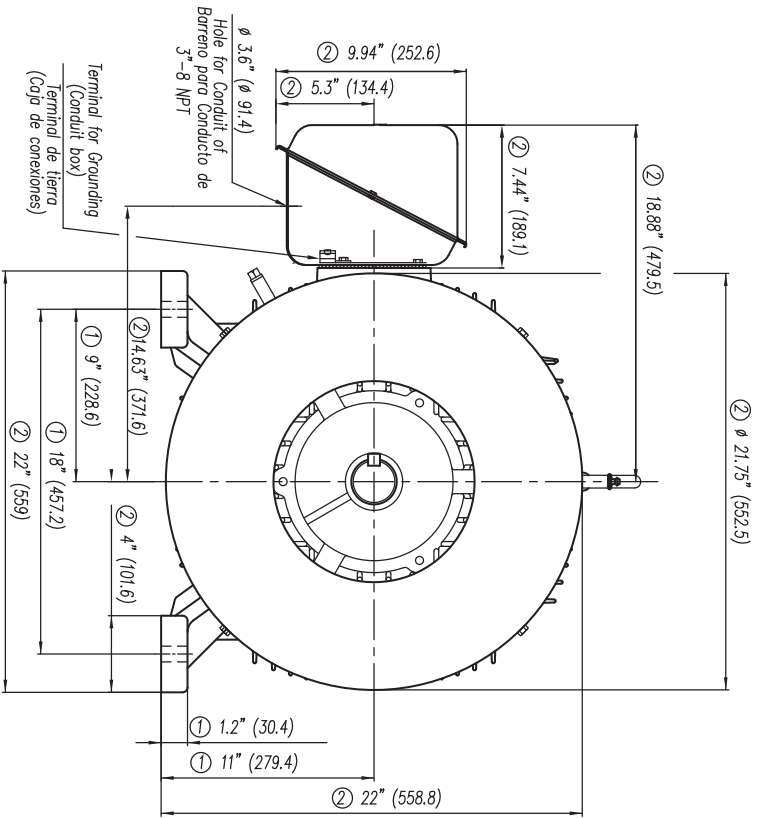
Description	3 PHASE - 3 LEAD - DELTA				
Voltage	L1	L2	L3	Connected together	
-----	-----	-----	-----	-----	-
-----	T1	T2	T3	-----	Δ

Special design :
------------------

Lubrication Information	
-------------------------	--

Manufacturer	Mobil Polyrex EM or equal
Type	Polyurea (standard)
DE Capacity (oz.)	14.50
ODEnd Capacity (oz.)	7.50

Relubricate bearings every six months (more frequent if conditions require). See Instruction Manual.

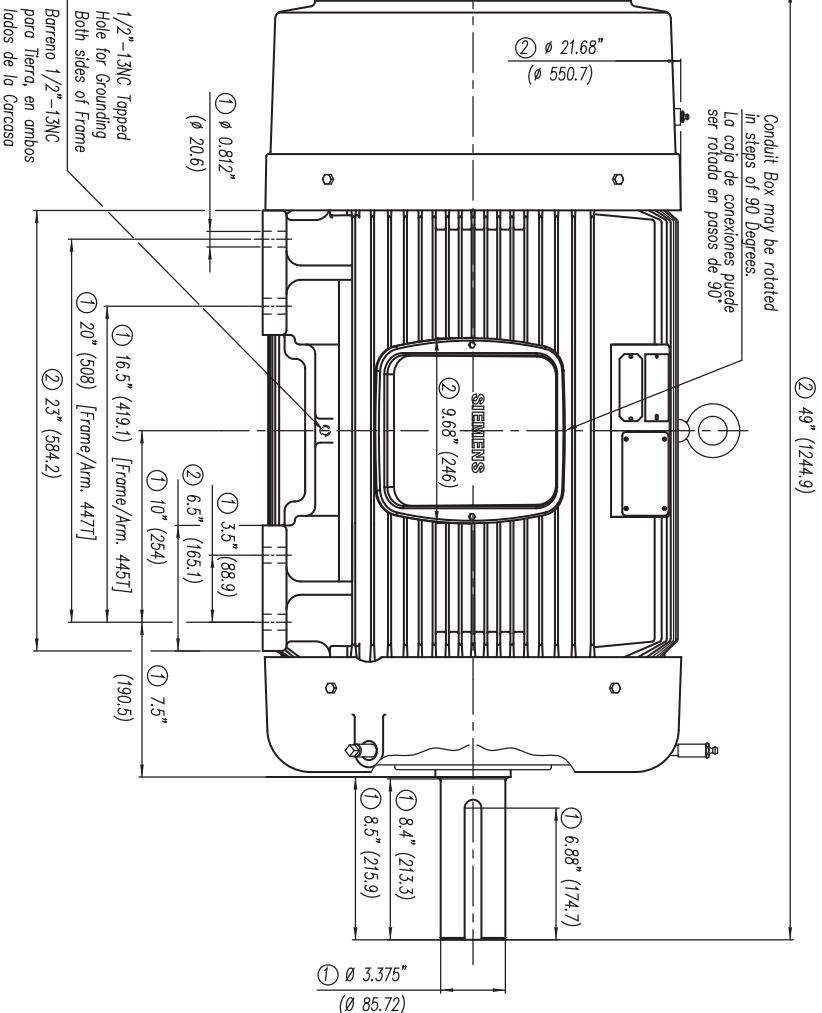


- ① Tolerances According to NEMA Std.
- ② All these dimensions corresponding to assemblies and castings shall have a tolerance as per DIN standard 1686-GTB-19.
- ③ Not According to NEMA Std.

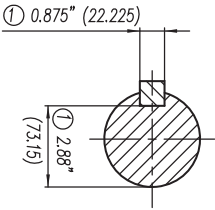
**CERTIFIED PRINT / CERTIFICACION**

CONFORME A LA

PROYECTO/PROJETO	59430001/543178
REP. / REP.	REP. / REP.
TRAZADO	REP. / REP.
REP. / REP.	REP. / REP.
REP. / REP.	REP. / REP.



②



**Keyseat detail**  
**Detalle Cuñero**

Tot. in mm. acc. to / Tot. en mm. según DIN-1686-GTB-19		European Projection / Proyección Europea		Modific.	
Over/desde /o/hasta	18	± 4.5			
	30	± 4.7			
	50	± 5			
	80	± 5.5			
	120	± 6			
	180	± 6.5			
	250	± 7			
	315	± 7.5			
	400	± 8			
	500	± 8.5			
	630	± 9.5			
	800	± 10			

Dim. in inches / Dim. en pulg.	
Drawn/Elab.	08/04/10
Check/Rev.	08/04/10
Std/dtd./Aut.	A. Real
Name/Nombre	A. Perez

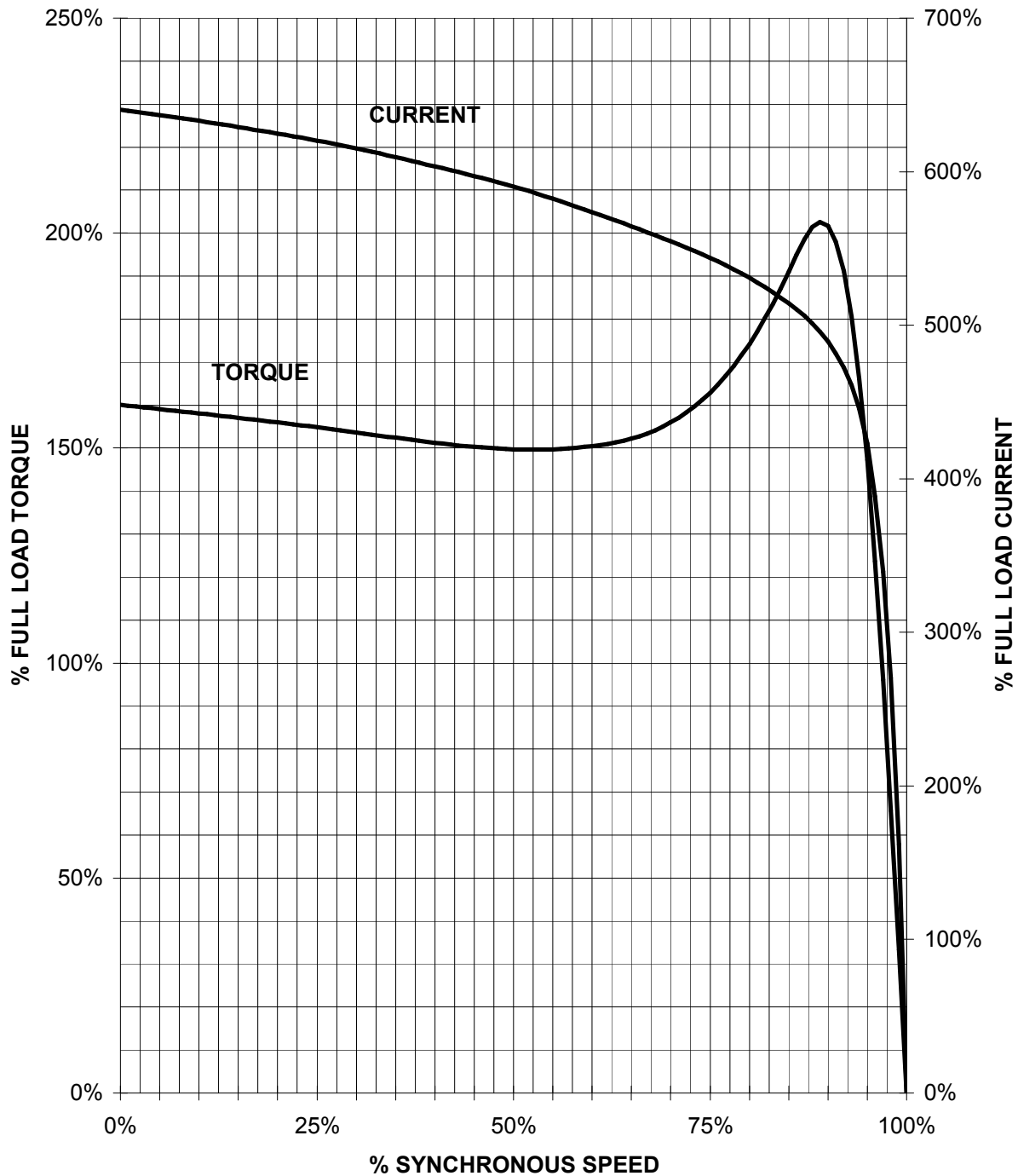
  

<b>SIEMENS</b>	<b>Outline / Dimensiones</b>
GUADALAJARA FACTORY	New NEMA Motors (T) Long Shaft/ Espiga Larga
	Typo: GP10 Y GP100 445/447T FRAME (Epoct & mNP)
Ref: 3MSE 750 0646 0)	3MSE 750 1511
Rep: /	Rep: /

# SIEMENS INDUSTRY, INC.

HP 200    VOLTS < 600V    RPM 1800    TYPE GP100  
HZ 60    PHASE 3    FRAME 447T    NEMA B

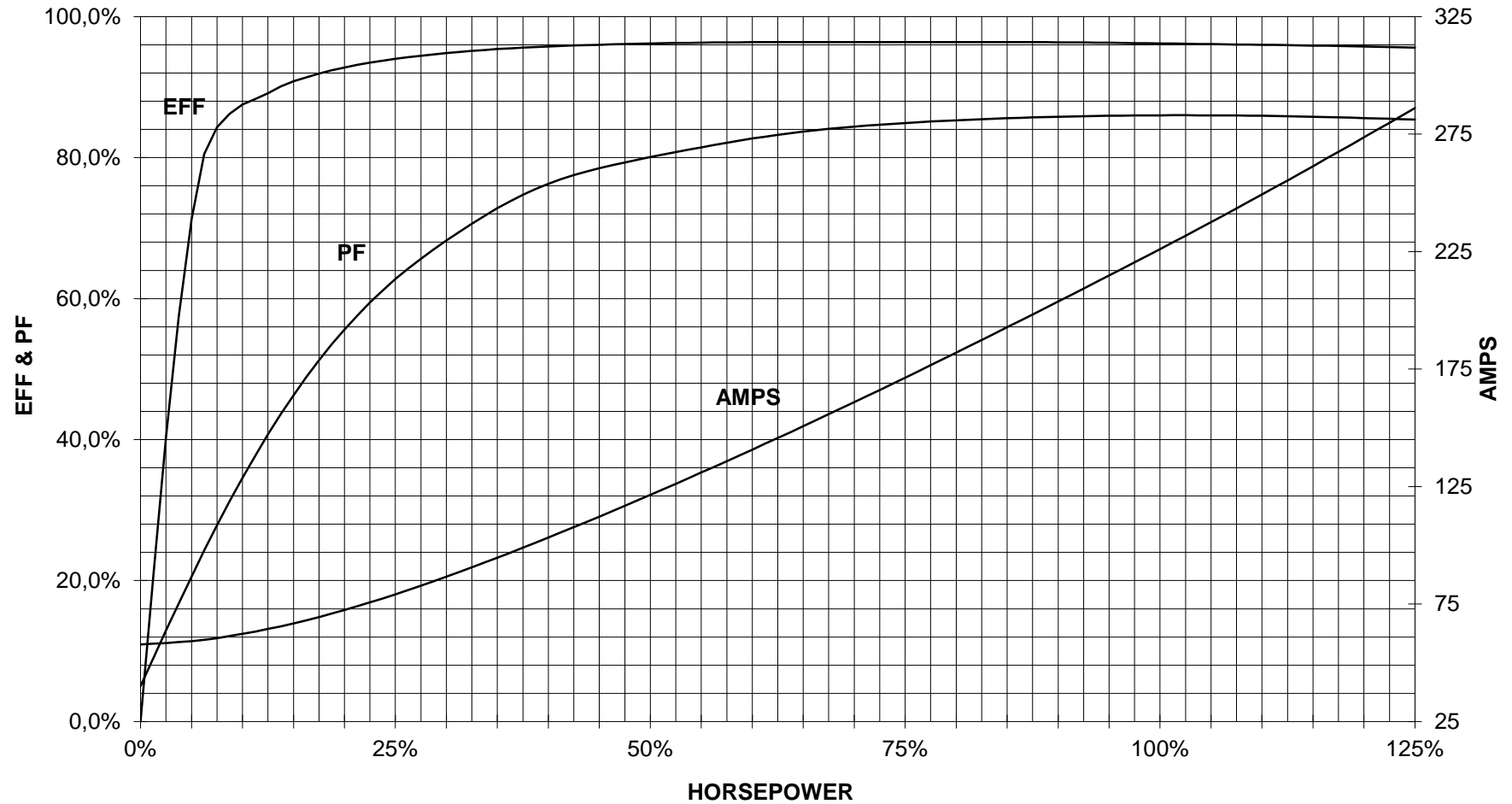
## TORQUE & CURRENT VS. SPEED



CUSTOMER: \_\_\_\_\_ ORDER#: \_\_\_\_\_

200 HP 1800 RPM 447T FRAME 460 VOLTS 3 PHASE NEMA DESIGN B

**SIEMENS INDUSTRY, INC.**  
**PERFORMANCE CURVE**  
**GP100**



CUSTOMER: \_\_\_\_\_ ORDER #: \_\_\_\_\_

PERFORMANCE BASED ON DESIGN CALCULATIONS. SUBJECT TO CHANGE WITHOUT NOTICE.

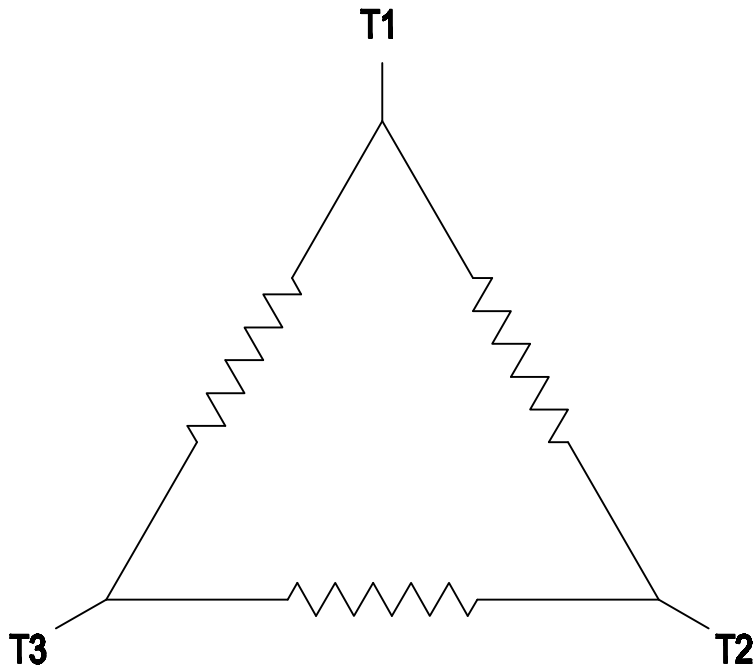
REV. 1

2

1

### 3 PHASE - 3 LEADS - DELTA

L1	L2	L3	CONN.
T1	T2	T3	△



B

B

A

A

THIS IS A CAD DRAWING  
DO NOT MAKE MANUAL CHANGES

01 | 09-27-07

TYPE

-CONFIDENTIAL-

PROPERTY OF

Siemens Energy & Automation, Inc.  
Industrial Motor Division - Little Rock, AR

FRAME

HP

NAME

WIRING DIAGRAM

VOLTS

RPM

HZ

PH

3

Customer

DRAWN 9.24.07

DATE JRH

CHECKED

DATE

APP

DATE

SHEET

1 OF 1

Sim. To

PART NO.

51-382-114-504

A

2

1