

NEMA Motor Data



Ordering data : **1LE2221-2AA11-4EA3**

Client order no. :
 Order no. :
 Offer no. :
 Remarks :

Item no. :
 Consignment no. :
 Project :

| Nameplate Data | Mounting and motor protection |
|----------------|-------------------------------|
|----------------|-------------------------------|

| | | | |
|---------------|---------------------------------|------------|--------------------|
| Type | GP100 - NEMA Premium Efficiency | | |
| HP | 7.5 | Rating | Cont. |
| Voltage | (14) 208-230/460V, | Ins. Class | Class F (Standard) |
| Amps | 17.6 / 8.8 A | S.F. | 1.15 |
| FL RPM | 3520 | Amb. Temp. | 40 deg C |
| FL Efficiency | 89.5 % | Temp. Rise | Class B |
| FRAME | 213TC | kVA Code | H |
| DE AFBMA | 40BC02JPP30 | NEMA Des | B |
| ODE AFBMA | 40BC02JPP30 | Mtr WT | 147.93 |
| 60 Hertz | 3 Ph TEFC | IP | 35 |

| | |
|----------------------|-----------------------------|
| Type of construction | (E) Foot mounted - C-Face |
| Motor protection | (A) No winding protection |
| Terminal box design | (3) Mounting - F-1 |

| Bearing Data | | |
|--------------|--|--|
|--------------|--|--|

| | | |
|--------------|---------------|---------------|
| | DE | ODE |
| Bearing Size | 6208 ZZ C3 S0 | 6208 ZZ C3 S0 |
| Bearing Type | Ball Bearing | Ball Bearing |
| AFBMA | 40BC02JPP30 | 40BC02JPP30 |

| Typical Performance Data | | | | | |
|--------------------------|--|--|--|--|--|
|--------------------------|--|--|--|--|--|

| | | | | | |
|---------------|---------|--------|--------|--------------|--------|
| Load | No Load | 1/2 | 3/4 | Full Load | LRC |
| Efficiency | | 89.6 % | 90.1 % | 89.5 % | |
| Power Factor | | 78.5 | 86.8 | 89.2 | |
| Current (A) | 3.0 A | 5.0 A | 6.7 A | 17.6 / 8.8 A | 63.0 A |
| Inverter Duty | VT | 20:1 | CT | 4:1 | |

| Mechanical Data | | | | |
|-----------------|--|--|--|--|
|-----------------|--|--|--|--|

| | | | | |
|-----------------------------------|--------------------------|---------|----------|---------|
| SAFE STALL TIME | HOT (s) | 17 | COLD (s) | 30 |
| Rtr wt (lbs) | 29.49 | Rtr WK2 | 0.42 | |
| FLT (lb-ft) | 11.000 | LRT | 182 | BDT 500 |
| Ext Load Inertia (WK2) Capability | 105.0 lb-ft ² | | | |

| Typical Noise Data | | | | | | | | | |
|--------------------|--|--|--|--|--|--|--|--|--|
|--------------------|--|--|--|--|--|--|--|--|--|

| | | | | | | | | | |
|------------------|---|-----|-----|------|------|------|------|-------|----|
| A-weighted Sound | Octave Band Center Frequencies Hertz (Hz) | | | | | | | | |
| Pressure Level | 125 | 250 | 500 | 1000 | 2000 | 4000 | 8000 | SPL | 81 |
| at 3 feet | 46 | 62 | 76 | 76 | 76 | 71 | 61 | SPwrL | 90 |

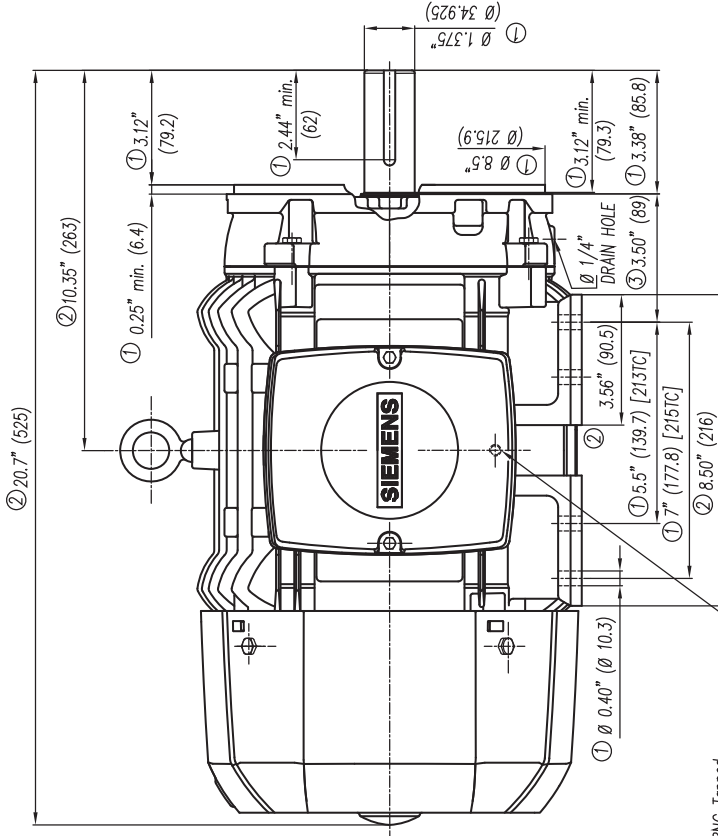
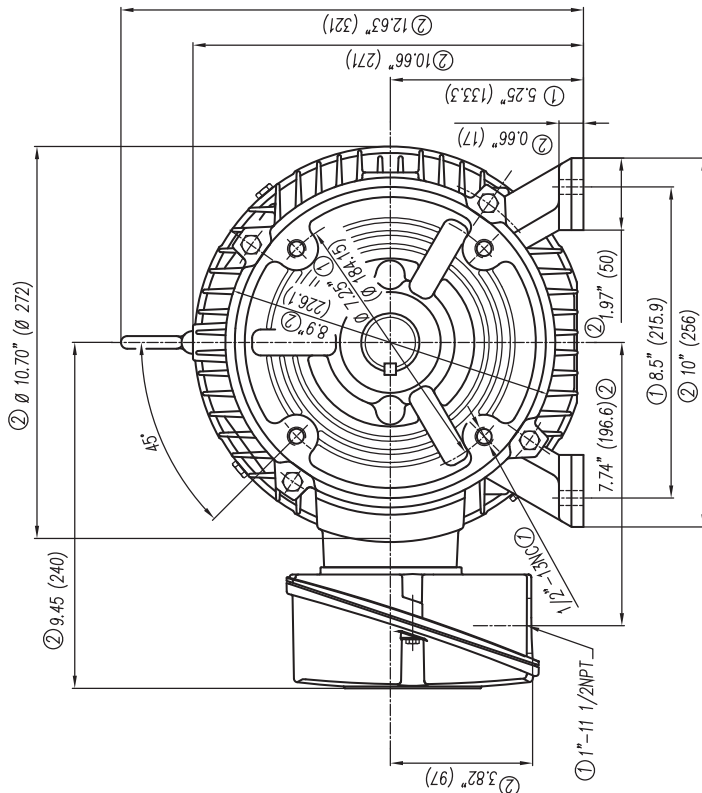
| Wiring Connection Information | | | | | |
|-------------------------------|--|--|--|--|--|
|-------------------------------|--|--|--|--|--|

| | | | | | |
|-------------|------------------------|-------|-------|--------------------------|--|
| Description | 3 PHASE - 9 LEAD - WYE | | | | |
| Voltage | L1 | L2 | L3 | Connected together | |
| LOW | T1 T7 | T2 T8 | T3 T9 | T4 T5 T6 YY | |
| HIGH | T1 | T2 | T3 | T4 T7-T5 T8-T6 T9 Y | |

| |
|------------------|
| Special design : |
|------------------|

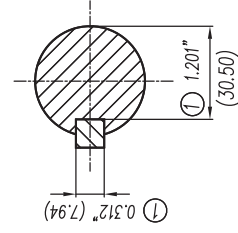
| Lubrication Information | |
|-------------------------|--|
|-------------------------|--|

| | |
|----------------------|---------------------------|
| Manufacturer | Mobil Polyrex EM or equal |
| Type | Polyurea (standard) |
| DE Capacity (oz.) | 2.60 |
| ODEnd Capacity (oz.) | 2.30 |



5/16"-18NC Tapped Hole for Grounding both sides of Frame

- 1) Tolerances According to NEMA Std.
- 2) All these dimensions corresponding to assemblies and castings shall have a tolerance as per DIN standard 1686-GTB 19.
- 3) Not According to NEMA Std.



Keyseat detail
Detalle Cuñero

| | | | |
|--------------------------------------|-----|---------|---------|
| CERTIFIED PRINT/CERTIFICACION | | | |
| CUSTOMER/CIENTE | | | |
| SUPPLIER/COMPRADOR | | | |
| PP | FRM | FRM/FRM | FRM/FRM |
| PP | FRM | FRM/FRM | FRM/FRM |

| | |
|---|-------|
| Tol. in mm. acc. to Tol. en mm. segun DIN-1686-GTB-19 | ± 4.5 |
| Over/hasta to/hasta | ± 4.7 |
| 18 | ± 5 |
| 30 | ± 5.5 |
| 50 | ± 6 |
| 80 | ± 6.5 |
| 120 | ± 7 |
| 180 | ± 7.5 |
| 250 | ± 8 |
| 315 | ± 8.5 |
| 400 | ± 9.5 |
| 500 | ± 10 |
| 630 | |
| 800 | |

| | |
|--|-----------|
| European Projection/ Proyeccion Europea | 1st Angle |
| Dim. in inches/Dim. en pulg. | |
| Date/Fecha | 03/03/08 |
| Drawn/Elab | Suzymari |
| Check/Rev. | |
| Std.Cnd./Aut. | |
| Type/ Tipo | GP100 |
| 213/215TC Arm. | |

Scale/Escala: Sin W/O

Outline/Dimensiones: New NEMA Motors

3MSE 222 0851a

Ref. 3MSE 222 0851

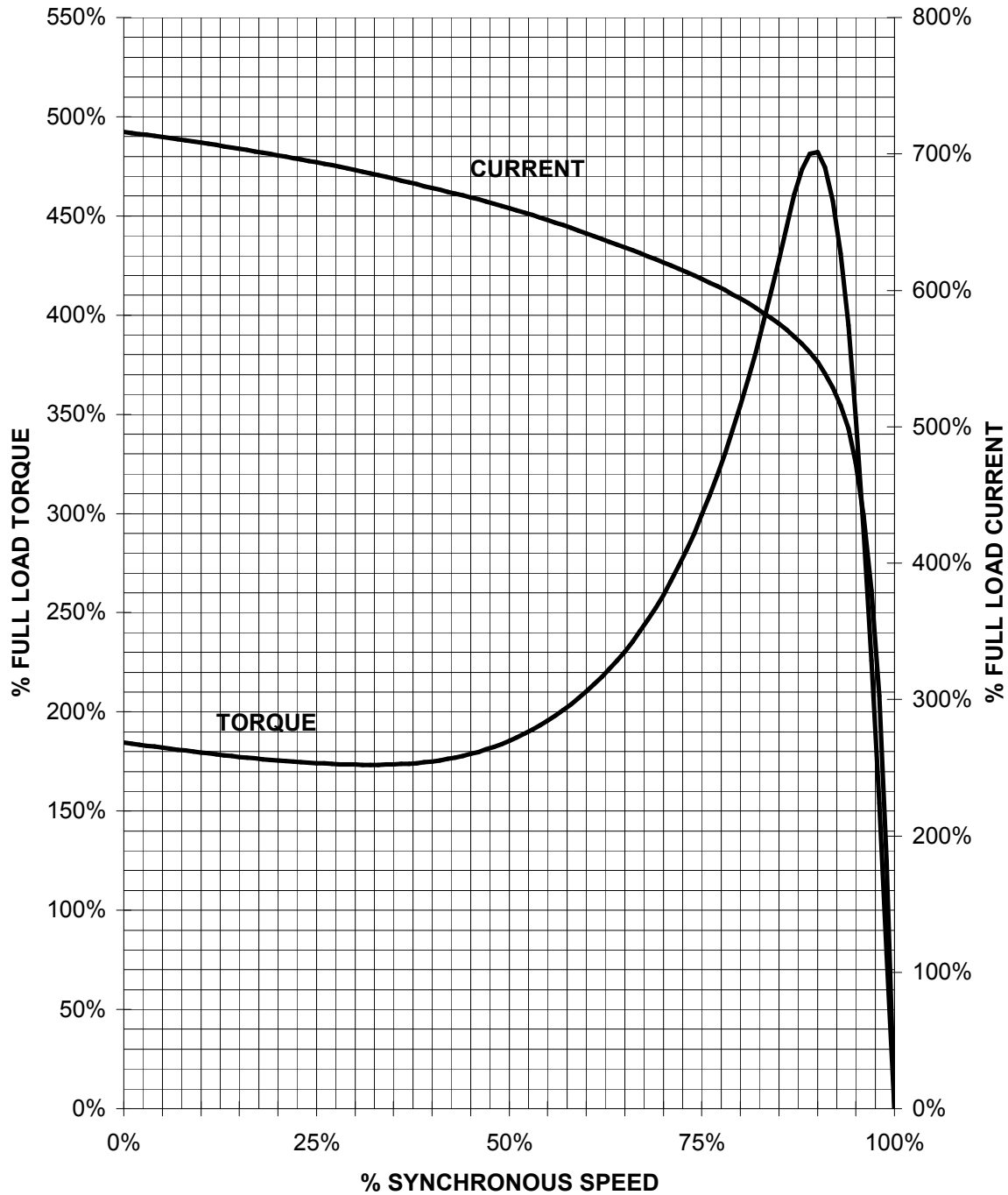
SIEMENS GUADALAJARA FACTORY

Se cambio formato a Inglés-Español y se especificó tipos en los que aplica este dibujo.
Changed the format to English-Spanish and was specified in what kind of motors apply this drawing.

SIEMENS INDUSTRY, INC.

HP 7,5 VOLTS < 600V RPM 3600 TYPE GP100
HZ 60 PHASE 3 FRAME 213T NEMA B

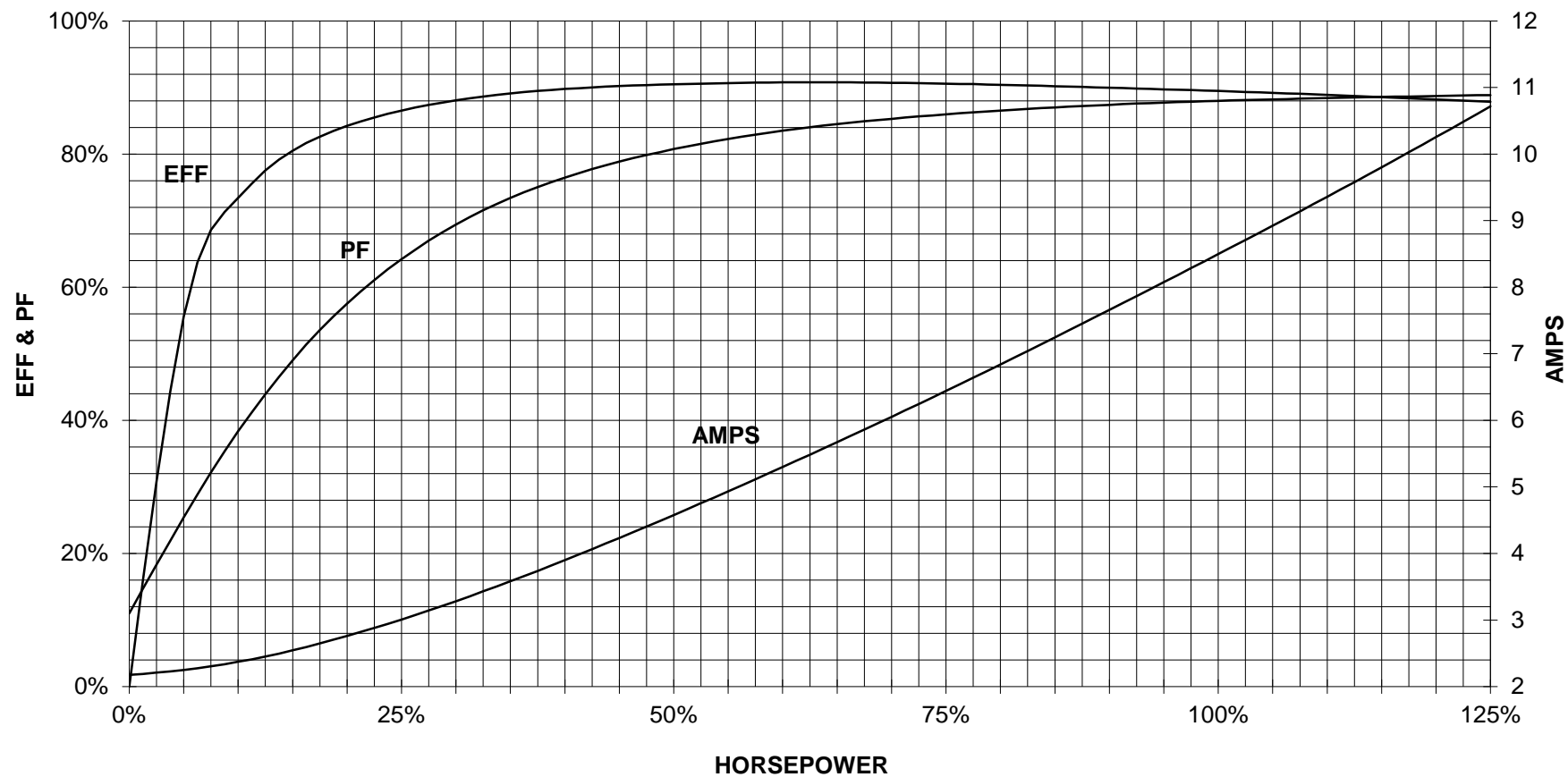
TORQUE & CURRENT VS. SPEED



CUSTOMER: _____ ORDER#: _____

7.5 HP 3600 RPM 213T FRAME 460 VOLTS 3 PHASE NEMA DESIGN B

SIEMENS INDUSTRY, INC.
PERFORMANCE CURVE
GP100



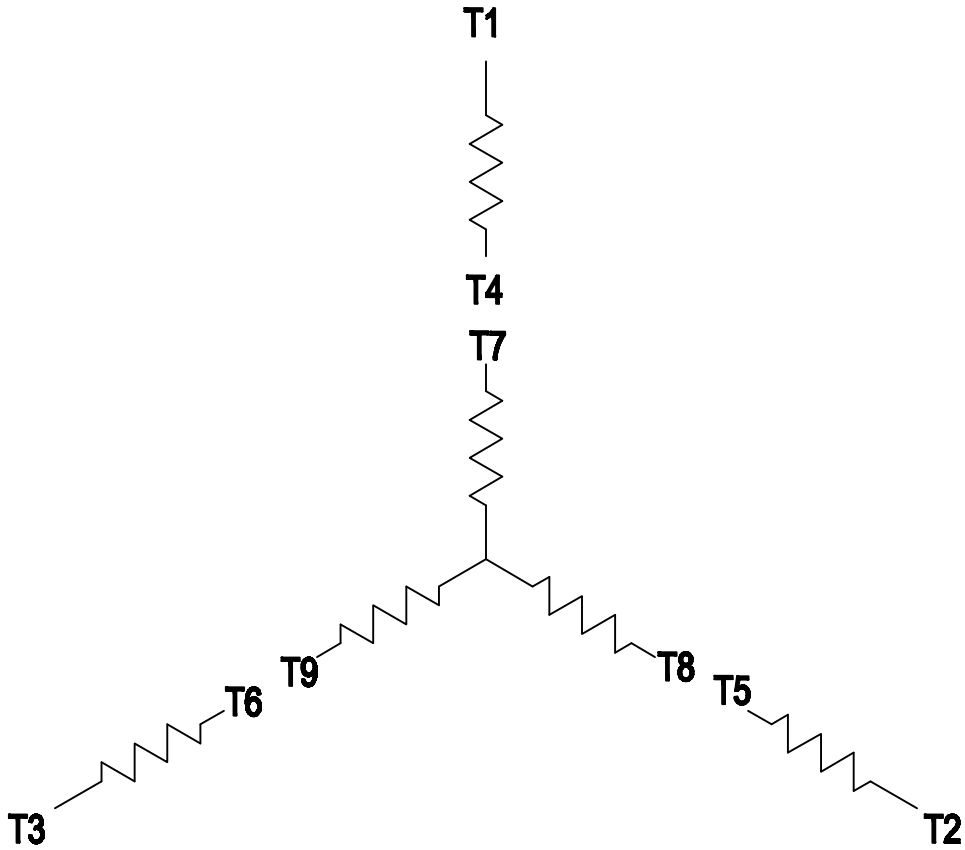
CUSTOMER _____ ORDER # _____ PO # _____

PERFORMANCE BASED ON DESIGN CALCULATIONS. SUBJECT TO CHANGE WITHOUT NOTICE.

REV. 1

3 PHASE - 9 LEADS - WYE

| VOLTS | LINES | | | CONNECTED TOGETHER | CONN. |
|-------|----------|----------|----------|--------------------|-------|
| | L1 | L2 | L3 | | |
| LOW | T1 T7 | T2 T8 | T3 T9 | T4 T5 T6 | Y Y |
| HIGH | T1 | T2 | T3 | T4 T7-T5 T8-T6 T9 | Y |



THIS IS A CAD DRAWING
DO NOT MAKE MANUAL CHANGES

01 | 09-27-07

TYPE

-CONFIDENTIAL-

PROPERTY OF

Siemens Energy & Automation, Inc.
Industrial Motor Division - Little Rock, AR

FRAME

HP

NAME

WIRING DIAGRAM

VOLTS

RPM

HZ

PH

3

Customer

PO #

SO #

| | | | |
|---------|---------|------|-----|
| DRAWN | 9.24.07 | DATE | JRH |
| CHECKED | | DATE | |
| APP | | DATE | |

SHEET 1 OF 1

Sim. To

PART NO.

51-382-114-501

A