

## NEMA Motor Data



Ordering data : **1LE2221-1AA11-4GA3**

Client order no. :  
Order no. :  
Offer no. :  
Remarks :

Item no. :  
Consignment no. :  
Project :

Nameplate Data	Mounting and motor protection
----------------	-------------------------------

Type	GP100 - NEMA Premium Efficiency		
HP	1.0	Rating	Cont.
Voltage	(14) 208-230/460V,	Ins. Class	Class F (Standard)
Amps	2.8 / 1.4 A	S.F.	1.15
FL RPM	3520	Amb. Temp.	40 deg C
FL Efficiency	82.5 %	Temp. Rise	Class B
FRAME	143TC	kVA Code	K
DE AFBMA	25BC02JPP30	NEMA Des	B
ODE AFBMA	25BC02JPP30	Mtr WT	59.97
60 Hertz	3 Ph      TEFC	IP	35

Type of construction	( G ) Round body - C-Face
Motor protection	(A) No winding protection
Terminal box design	(3) Mounting - F-1

Bearing Data		
--------------	--	--

	DE	ODE
Bearing Size	6205 ZZ C3 S0	6205 ZZ C3 S0
Bearing Type	Ball Bearing	Ball Bearing
AFBMA	25BC02JPP30	25BC02JPP30

Typical Performance Data					
--------------------------	--	--	--	--	--

Load	No Load	1/2	3/4	Full Load	LRC
Efficiency		79.3 %	82.1 %	82.5 %	
Power Factor		65.2	77.4	81.1	
Current (A)	0.7 A	0.9 A	1.1 A	2.8 / 1.4 A	12.0 A
Inverter Duty	VT	20:1	CT	4:1	

Mechanical Data					
-----------------	--	--	--	--	--

SAFE STALL TIME	HOT (s)	12	COLD (s)	16	
Rtr wt (lbs)	7.47	Rtr WK2	0.04		
FLT (lb-ft)	1.500	LRT	173	BDT	380
Ext Load Inertia (WK2) Capability	105.0 lb-ft <sup>2</sup>				

Typical Noise Data									
--------------------	--	--	--	--	--	--	--	--	--

A-weighted Sound	Octave Band Center Frequencies Hertz (Hz)								
Pressure Level	125	250	500	1000	2000	4000	8000	SPL	74
at 3 feet	32	52	69	70	67	60	51	SPwrL	83

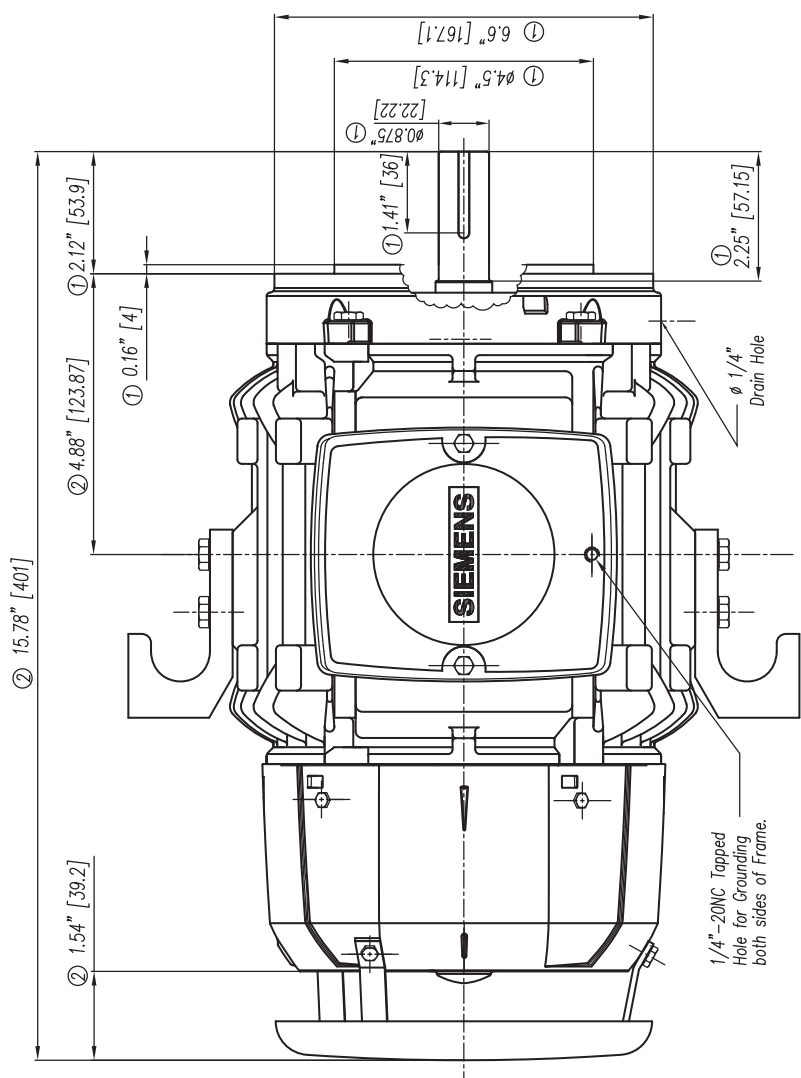
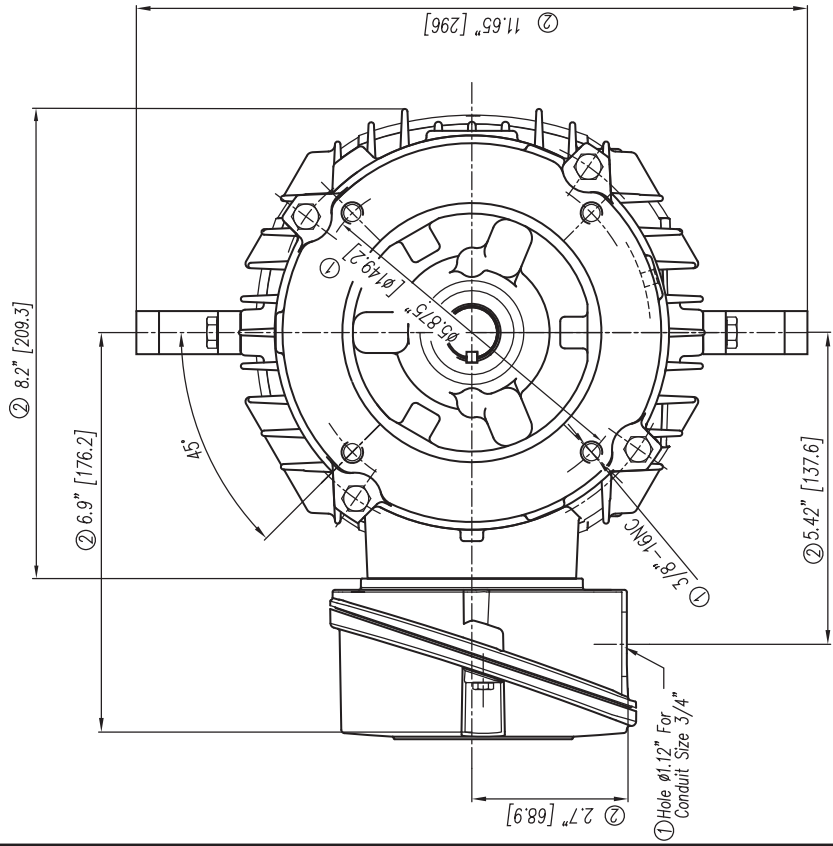
Wiring Connection Information					
-------------------------------	--	--	--	--	--

Description	3 PHASE - 9 LEAD - WYE				
Voltage	L1	L2	L3	Connected together	
LOW	T1 T7	T2 T8	T3 T9	T4 T5 T6      YY	
HIGH	T1	T2	T3	T4 T7-T5 T8-T6 T9      Y	

Special design :
------------------

Lubrication Information	
-------------------------	--

Manufacturer	Mobil Polyrex EM or equal
Type	Polyurea (standard)
DE Capacity (oz.)	0.30
ODEnd Capacity (oz.)	0.30

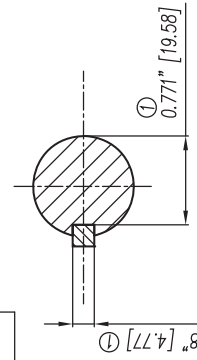


1/4"-20NC Topped Hole for Grounding both sides of Frame.

Ø 1/4" Drain Hole

- ① Tolerancias acorde a NEMA Std.
- ② All these dimensions corresponding to assemblies and castings shall have a tolerance as per DIN standard 1686-GTB 19.
- ③ Not According to NEMA Std.

CERTIFIED PRINT/CERTIFICACION			
CUSTOMER/CLIENTE		SUN/OSBORN/CLIFTER	
IP	ENV	FRAME/ENK	TYPE/TPD
		W/IS	PH/AS
			RE



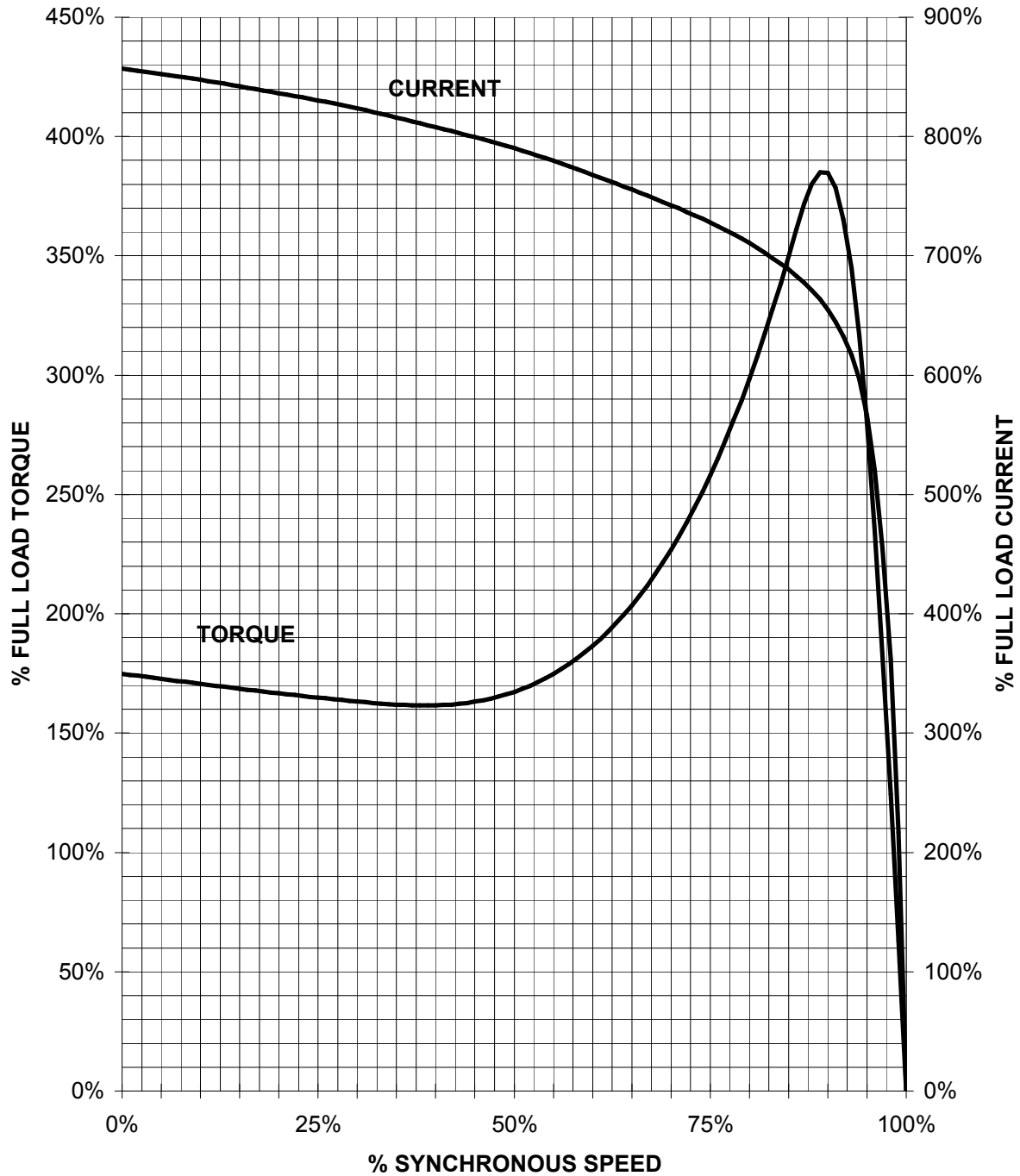
Keyseat detail  
Detalle Cuñero

 European Projection/ Proyeccion Europea	 Molded in	O.Se. cambió formato a Inglés-Español y se especificó tipos en los que aplica este dibujo. a) Changed the format to English-Spanish and was specified in what kind of motors apply this drawing.	
		Dim. in inches/Dim. en pulg.	Date/Fecha
Tol. in mm. acc. to/Tol. en mm. según DIN-1686-GTB-19 Over/desde To/hasta	18 ± 4.5 30 ± 4.7 50 ± 5 80 ± 5.5 120 ± 6 180 ± 6.5 250 ± 7 315 ± 7.5 400 ± 8 500 ± 8.5 630 ± 9.5 800 ± 10	Name/Nombre Guaymán	Scale/Escala Sin W/O
Drawn/Elab. 28/02/08	Check/Rev.	Type/ Tipo: GP10	3MSE 220 0852a
Std.Ckd./Aut.	143/145TCY Frame	Ref.	Rep./ 3MSE 220 0852 SGG
<b>SIEMENS</b> GUADALAJARA FACTORY		Outline/Dimensiones New NEMA Motors	

# SIEMENS INDUSTRY, INC.

HP 1 VOLTS < 600V RPM 3600 TYPE GP100  
HZ 60 PHASE 3 FRAME 143T NEMA B

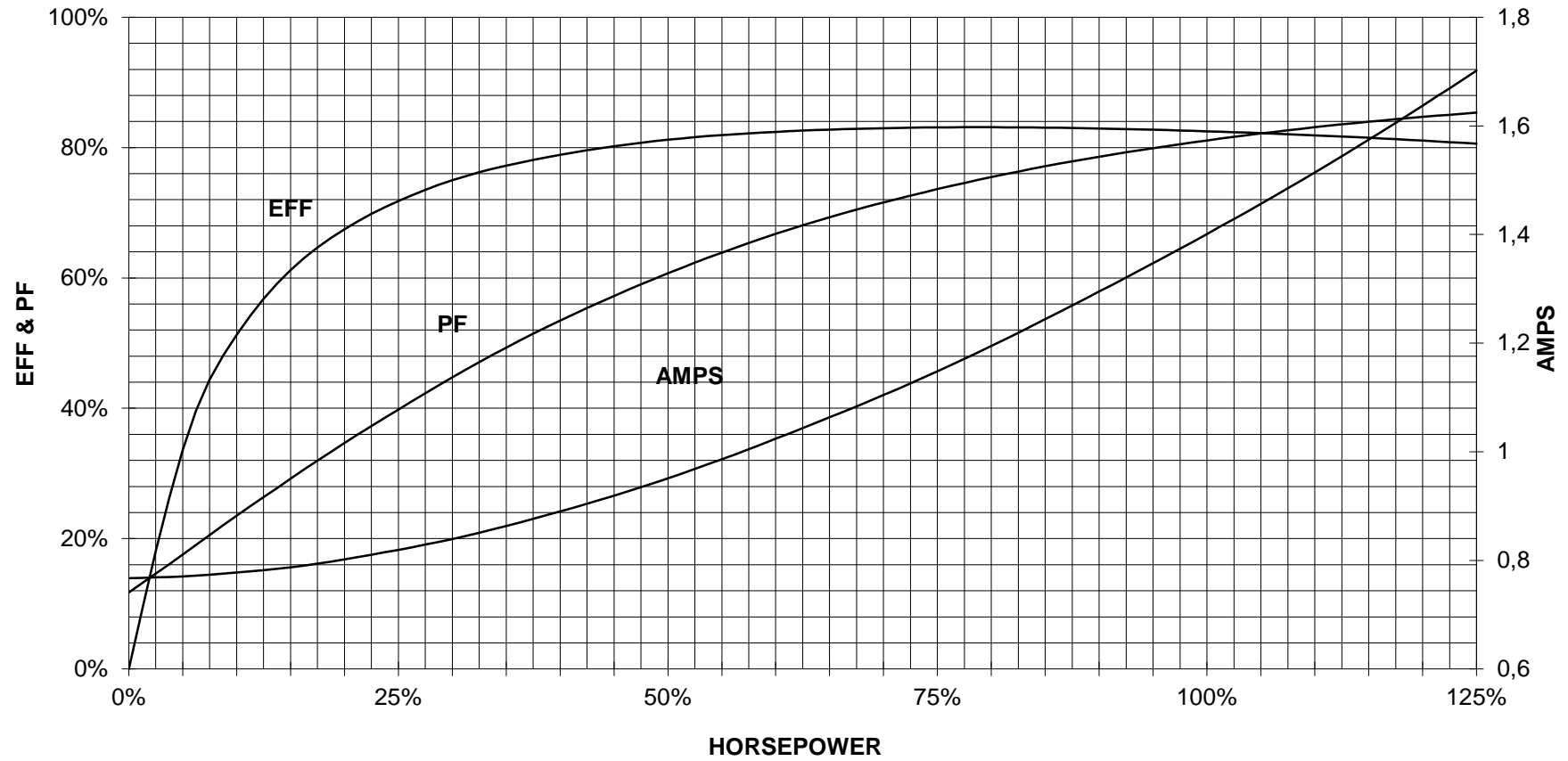
## TORQUE & CURRENT VS. SPEED



CUSTOMER: \_\_\_\_\_ ORDER#: \_\_\_\_\_

1 HP 3600 RPM 143T FRAME 460 VOLTS 3 PHASE NEMA DESIGN B

**SIEMENS INDUSTRY, INC.**  
**PERFORMANCE CURVE**  
**GP100**



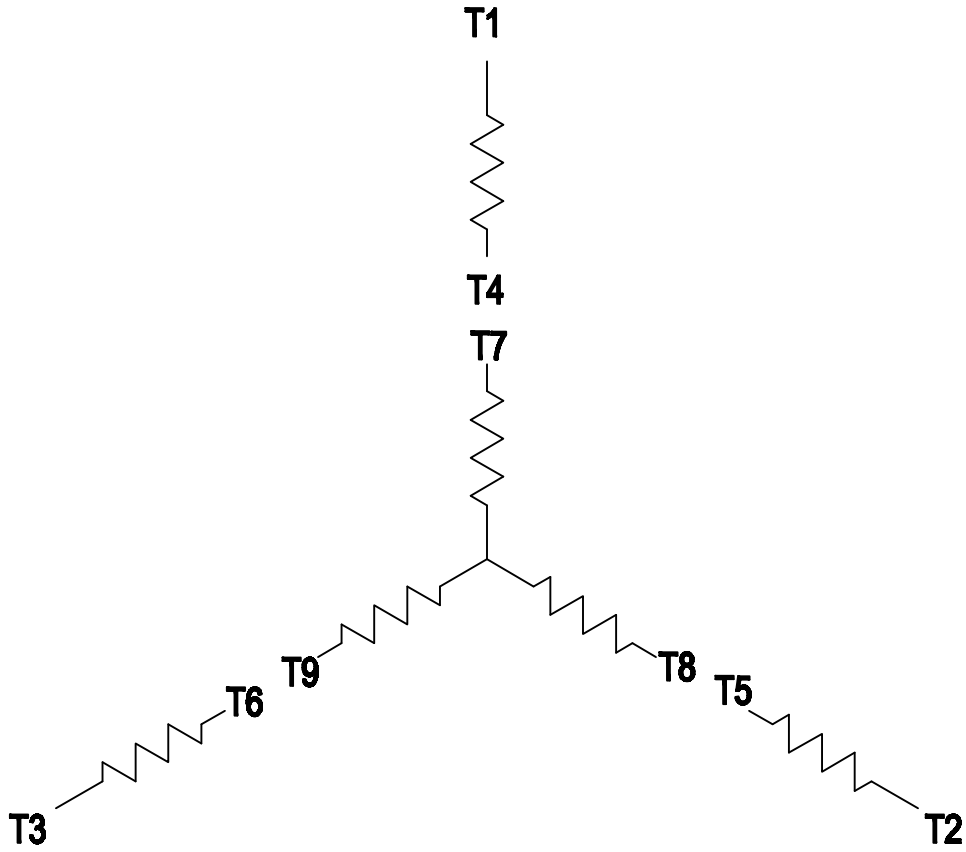
CUSTOMER \_\_\_\_\_ ORDER # \_\_\_\_\_ PO # \_\_\_\_\_

PERFORMANCE BASED ON DESIGN CALCULATIONS. SUBJECT TO CHANGE WITHOUT NOTICE.

REV. 1

### 3 PHASE - 9 LEADS - WYE

VOLTS	LINES			CONNECTED TOGETHER	CONN.
	L1	L2	L3		
LOW	T1 T7	T2 T8	T3 T9	T4 T5 T6	Y Y
HIGH	T1	T2	T3	T4 T7-T5 T8-T6 T9	Y



THIS IS A CAD DRAWING  
DO NOT MAKE MANUAL CHANGES

01 | 09-27-07

TYPE

-CONFIDENTIAL-

PROPERTY OF

Siemens Energy & Automation, Inc.  
Industrial Motor Division - Little Rock, AR

FRAME

HP

NAME

WIRING DIAGRAM

VOLTS

RPM

HZ

PH

3

Customer

PO #

SO #

DRAWN 9.24.07

DATE JRH

CHECKED

DATE

APP

DATE

SHEET

1 OF 1

Sim. To

PART NO.

51-382-114-501

A